

Keyhole

December 2025

50p



www.stpeterlittleover.org.uk

Phone: 01332 767802

How to contact us



01332 767802



**35 Church Street
Littleover Derby
DE23 6GF**



office@stpeterlittleover.org.uk



In Person at The Parish Office

Office open Mon, Tue, Thu & Fri 9.30am-2.30pm

Church Administrator: Iona Hague

Office@stpeterlittleover.org.uk

Who's Who

Vicar

Revd Canon Alicia Dring
Phone 01332 767802
alicia@stpeterlittleover.org.uk

Curate

Revd Emma Mallord
Phone 07752 645496
emma@stpeterlittleover.org.uk

Associate Priest

Revd Jason Kennedy
07572 987083
jason@stpeterlittleover.org.uk

Curate

Revd Lianne Green
07970 987419
lianne@stpeterlittleover.org.uk

Readers

Paul Taylor 01332 609337
Carole Dickinson 01332 766855
Anne Burton 07718 139787

Church Wardens

Helene Roe 01332 760682
helene@stpeterlittleover.org.uk
Chris Jones 01332 776634
chris-jones-derby@outlook.com

PCC Secretary

Mrs Julie Scott
pcc@stpeterlittleover.org.uk

Finance Manager

Mr Paul Cheetham
office@stpeterlittleover.org.uk

Safeguarding

safeguarding@stpeterlittleover.org.uk

Hub Bookings

bookings@stpeterlittleover.org.uk

St Peter's Junior School

Headteacher
Mrs Helen Reader 767158
headteacher@stpeters.derby.sch.uk

Keyhole Magazine

Editorial Team
office@stpeterlittleover.org.uk

The articles and viewpoints expressed in this magazine are not necessarily those of the Vicar or the PCC.

Deadline for next edition – by email before the **10th** of the previous month.

A colour version of Keyhole can be found on the Church website:

www.stpeterlittleover.org.uk

From the Vicarage

Dear Friends

Christmas is coming, the shopping lists are getting longer, supermarket deliveries are booked, family gatherings loom large and there barely seems enough time to fit everything in.

I wonder if Mary felt like this before Jesus was born – away from home, staying with Joseph's relatives, and all that distance to travel (probably walking, there's no mention of a donkey, sorry). I wonder if she felt prepared to become a mother for the first time?

However organised we think we are, there is nearly always something or someone that we have forgotten. But I wonder how it is for God that in 2025 many people have forgotten Him.

The story of Jesus' birth rarely features in hardly any of the many different Christmas promotions. It's usually about food, or family, TV shows or Christmas specials.

We are encouraged to spend and consume, to celebrate – all to excess. And we readily join in, because, after all, it is Christmas....

But I wonder how it would be if we turned the volume down a bit, did a bit less, felt less pressure?

The celebration of Christmas is part of our life as Christians – the coming of Jesus into our world as a vulnerable newborn, in a strange town, to a young mother. With a shining star, heavenly choirs, racing shepherds and visiting foreign dignitaries. We know the story. We love the familiar carols and readings.

And yet The coming of Christ into the world wasn't cosy and familiar. It really did change things forever and it's impact echoes down the years to us now in Advent 2025. How ready are we to meet with God himself? To encounter him not with fanfare and mulled wine. But with an honest need for him to change the world, starting with us.

When we realise for ourselves that God in human form changes everything – that the baby became a man, showed us what love looked like, died an innocent man and with his resurrection restores us back to God. Christmas is only the start of the story – but it's a story that you are invited to enter, will you let it change your life, as it did for the shepherds and the wise men?

This Advent, along with the food and the shopping, take time to ask your heart if you are ready to welcome the King of Kings – to allow Him to change your life. If you're willing to find out more, He can and will change everything.
With blessings

Alicia

From the November 2025 Registers

Funerals

**10 Nov
20 Nov**

**Joe Aveline
Barbara Crossley**

Tiddlywinks



stay
and
play

1.30pm – 2.45pm

Mondays in term time

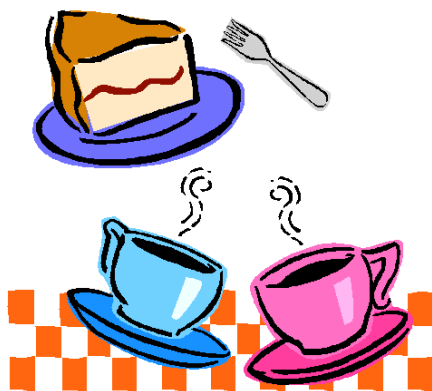
St Peter's Hub

Toys, songs, games, crafts and
refreshments

The Crossed Keys Café

St Peter's Hub

Mondays in Term Time
9.30am – 12.30pm



Everyone welcome

Andrew Race Vicar of Grimsby Minster

Reverend Andrew Race who served his curacy at St Peter's 2015-2019 has been made Vicar to Grimsby Minster in the Diocese of Lincoln. After leaving St Peter's he became Vicar of Castle Donington with Lockington cum Hemington in the Diocese of Leicester.



Alicia and Steve attended, along with Helene Roe our church warden, who has worked with Andrew over many years at New Wine.

He was collated and inducted on Thursday 6 November and his first major service was for the town Remembrance Service – attended by thousands of people and the fifth largest Remembrance Service outside of London. A baptism of fire – but he was soon introduced to the local community!



Advent and Christmas Services

We have a myriad of different services and opportunities to celebrate Christmas at St Peter's. Whether you're looking for traditional or something for the children, we hope to offer something for just about everyone during the festive season.

Candlelit Carols Sun 14 Dec 7pm

Join in with the magical atmosphere of a candlelit church, sharing in the Familiar readings and carols as well as a few extra surprises. Following the success last year we will be offering mulled wine (or juice) and mince pies after the service. A collection will be taken for Christmas Lunch on Jesus – providing food for families who would otherwise miss out.



Children's Nativity Sun 21 10am

Dress up and join in whatever your age – come as a star, a shepherd, a king and help to retell the familiar story. It's usually a bit chaotic, but it's always great fun and everyone is welcome to do as much or as little as you'd like.

Christingle Christmas Eve 3pm & 5pm

Always popular, everyone is welcome to join in our Christingle to celebrate God's blessings to us and Jesus, the light of world joining us in the mess of the everyday. Make your own Christingle with the kit provided – and you can always help recycle the elements at the end if you wish, or take your Christingle home. Collection for the work of The Children's Society



Midnight Service Christmas Eve 11.15pm

Often referred to as Midnight Mass, this service is timed so that you receive Holy Communion – or a blessing if you prefer – just after midnight into Christmas Day. This is a quieter service with a few carols and a great way to remember what Christmas is really all about.

Christmas Day 8am and 10am

Spoken Holy Communion at 8am is a calm and measured way to start your busy day before joining with family and friends for a frenzy of food, gifts and washing up. Service usually 45 minutes.

All Age Holy Communion at 10am offers familiar carols, some silly present sharing and an opportunity to celebrate the birth of Jesus Christ. Service lasts approximately hour and a quarter.



Thirsty Thursday



at The White Swan Littleover

**11 December at 7.30pm
catch up with the fellas**

Call Steve for more info
07790 431090

CHURCHYARD CLEAN UP



**Now on a break through the winter,
restarting in the Spring!**

ACCESS IN CHURCH

There are wheelchairs available in Church and there are two BackFriends (support frames for those with sore backs) which fold out onto the pews. For those with hearing difficulties, we have a Loop Transmission System, covering the whole church. Hearing aids adjusted to stop 'T' will pick up the service directly. Ask the welcome team for more details.



Jonathon Hemingray Sculpture

Handmade wooden sculptures – tactile, expressive and fluid – demonstrating the grace and love of God

Suitable for ordination, baptism, wedding, birthday, anniversary or in memoriam

Based in Derby so local collection is easy
Other designs are also available please take a look at my website or call for a specific commission.

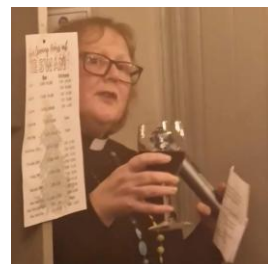
www.jonathonhemingray.co.uk

jonathonhemingray@hotmail.com

Christmas in the wider community

Raise a Glass Monday 8 Dec 8pm

If you have someone missing this Christmas, you might want to join us at The White Swan for this gentle way to give thanks for someone who has died. Buy your drink, and their usual tipple. There's a time of quiet and a short prayer and we give thanks for those we have known and loved.



Carols at the Co-op Sat 20 Dec 10.30am

Bringing some Christmas joy and familiar carols to the centre of the village on the Saturday before Christmas – an opportunity to join in with your favourites as you do your last minute shopping.

Just rock up anytime between 10.30am and 11.15am, grab a carol sheet and join in.

Carols at The Oaklands Pub Thursday 18 Dec 5.45pm

With a new Landlord about to take up their post, this event has yet to be confirmed but we hope will go ahead as we join with our colleagues from Newmount Methodist Church to share carols with the customers.



Carols at The White Swan Thursday 18 Dec 8pm

Billed as the pubs Carol Service it's always a great celebration to sing familiar with the customers and rejoice together. Led by Phil Eley on his accordion, make sure you come early as this can get really packed!

Carols in local Nursing Homes

We have great relationships with a number of our local nursing homes going in monthly to share communion with the residents who otherwise couldn't get to church. We are expanding things in December to also offer carols with a small group of singers at each location. We hope to be **at Heatherton House 9 Dec 3pm; Brookfields on 16 Dec 11am, Cedar Tree 17 Dec 10.15am and Derby Heights 17 Dec 2pm.**



The Bereavement Journey

Grief is hard, death can impact all of life

Losing a loved one is a hard thing to deal with. We are starting a course in January which is for anyone who has been bereaved, either recently, or at any point in the past.

The course is called *The Bereavement Journey* and it is a safe place to talk with others who have been bereaved, or just to hear how others are experiencing and dealing with similar issues. Grief is more easily managed when journeying with others and past losses can be opened up about safely. The course will cover topics such as attachment, separation and loss, pain and other responses of grief, anger and guilt. Along with coping with others reactions, adjusting to change, and delayed and suppressed grief. We'll also look at how to move forward healthily and how our grief can affect our faith.



There will be some videos to watch, along with discussions in small groups. And, of course, plenty of tea and cake to help as we process these feelings. If you think this is something that would be helpful for you, then we would love for you to join in.

For more information please visit: www.thebereavementjourney.org

Mondays, 1.30pm, St Peter's Hub, Normanton Lane, DE23 6GP.

Starting on 12 January for seven weeks. If you would like to sign up or if you have any questions please speak to Emma – 07752 645496 or email:

emma@stpeterlittleover.org.uk

Dementia Carols, Communion and Concert



Our bi-monthly service suitable for those living with dementia has a very special event on **11 December at 2pm** offering

- Christmas Carols followed by a short service of Holy Communion
- Followed by refreshments
- Then joined by the Remini-Sing choir who have been working throughout November and December to present a Christmas concert at 3pm. The choir includes people from across the city living with dementia and conducted by the amazing Rach from Bright Futures.

Everyone is welcome but please do take care NOT to drive into Church Street after 3pm or you will likely get a ticket from the council as this is a School Safety Zone between 3pm and 3.45pm.

Remembrance Sunday November 2025

Our curate Reverend Emma Mallord led the Remembrance Service on 9 November where the weather was generously mild and dry.

We were delighted to welcome a good crowd from the community at the Memorial for the Act of Remembrance and laying of wreaths before proceeding inside for the service.

This was the first Remembrance Sunday without our friend and cornet player Dave Hargreaves who died earlier in the year. But his recording of the Last Post and Reville were played and his wife Irene stood by the memorial in tribute, holding his cornet and accompanied by son Brendan, wearing his Dad's medals, and his wife, Jules.



Littleover in Bloom

This is the time we have to take stock of our planting, summer planting is sometimes still in bloom and has to be removed to make way for more frost-resistant plants.

Corms have to be dug up wrapped and stored for winter, in order to bloom again next year. Bulbs have to be planted, before the ground gets too hard. This year as in previous years, we are kindly offered a donation of 1000 purple crocus bulbs. A gift from the Rotary club of Derby South.

These bulbs are part of the Rotary's, 'End Polio Now', worldwide publicity campaign.

The sight of the, 'Ruby Giant', popping up in the spring, is a reminder that some counties in the world still suffer from an epidemic of Polio. Africa has now been declared Polio Free! There are now only two countries that are known to still have cases of the disease, Pakistan and Afghanistan. With a small donation for an immunisation, it costs only £1 for 5 injections. These people can be helped.

You can help by getting in touch with Derby South Rotary, or getting in touch with us, we can pass your donation on.

Remember, 'Purple 4 Polio!! We will be sharing our bulbs with our partner community groups. We hope they will share with us their photos of the bulbs! Christmas is a time for giving!

Our next meeting will be Monday 1 December 1.30pm. Anyone is welcome to join us. Littleover Grange Hall, rear entrance, Park Lane. Contact Jan on 01332 348903 or jan.dante@virgin.net

Littleover Village

Littleover Historical Society

The Joyce Harpur Charity

This Charity was set up in December 1699 to help the poor of Littleover and is still being administered today by St Peter's Church.

At one of our meetings a member of our History Group, found a mention of, 'Harpur's Cottage', which set us all thinking? It took no time for my colleague, Chris Drury to begin some research, he has written an excellent piece of work, and can be read on our website www.littleover.org.uk There were very few people, at that time who left legacies! Joyce Harpur was the daughter of John Harpur, a Rector of Morley, being the daughter of a Rector, you wouldn't expect her to be wealthy, however, in her will Joyce left £20 to her brother also named John, to invest for the poor of Littleover – with charity land of approximately four acres to provide an income. To be handed out on Christmas Day. The charity still makes Christmas grants to this day.

How was she able to leave so much? Through the Harpur family tree, all was revealed! Her father was the great grandson of Sir Richard Harpur, the first person to build Littleover Hall and whose memorial is in the Chancel of St Peter's Church.

Next meeting Friday 12 December 10am. Rear entrance Littleover Grange Hall, Park Lane, DE23 6FX Visitors welcome. Join us for a chat and refreshments £3. Contact Jan on 01332 348903 or jan.dante@virgin.net



Hannah Fields Community Garden

offers great support for those who are feeling isolated, children who want to get muddy and explore or just for those who want to sit and enjoy a coffee surrounded by nature. Situated on Normanton Lane just down from the church they are open Tues and Thu-Sat for you to explore, buy a veg box or and enjoy their vegan café. Find out more at the Hannah Fields Community Garden Facebook Page or see the notice boards on their gates.

Bringing Blessing to others at Christmas

Christmas isn't just about the carols and gifts, food and family but also about being aware of how fortunate we are and in turn blessing others. Many of you will give to your own charities at Christmas but there are also some more local options, see below:

Christmas Connection Gifts

Derby City Mission run an amazing project that provides presents for children who may otherwise receive very little. And you can bring new toys, clothes, gadgets and gift cards suitable for children age 0 to 16 years old. Just bring them along to our Gift Service on Sunday 7 December at 10am and we will ensure they are delivered swiftly and prepared for delivery. Families in Littleover benefit directly from this project.

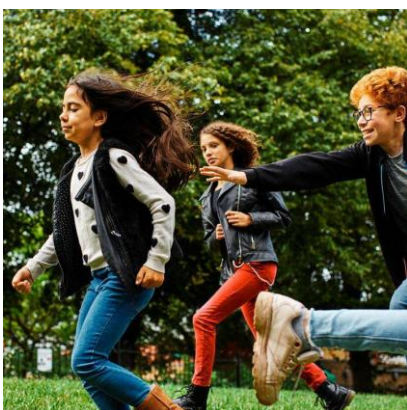


Reverse Advent Calendar

Rather than eat chocolate through Advent, you could collect food for a season food parcel for a local family. Include food that'd make a few meals as well as Christmas treats of chocolate, posh biscuits and crisps. Don't just buy basic, give them the things that you enjoy at Christmas. No alcohol please. Deliver your food in strong carrier bags to the Vicarage before 18 Dec. and we will ensure they are delivered to local families.

Christmas Lunch on Jesus

This is a national charity that is run locally by St Peter's in the City who deliver over 400 meals to families across the city. They supply meat, vegetables, crackers, pudding, chocolates and juice – enough to feed the household and they are delivered in the run up to Christmas. You can make a donation at our Candlelit Carol Service on 14 December 7pm, or drop your donation into the church or vicarage, clearly marked. Five families in Littleover are already booked to receive food from Christmas Lunch on Jesus this year.



The Children's Society

Every year donations given at our Christingle services goes to bless the work of The Children's Society that support children and families across the country. From bereavement support, to mentors, looking after young carers, supporting those who are in the care system or runaways. Children's Society goes out of their way to care for those who are most vulnerable. Donations can be given in cash or electronically.



Support Our Local Parks with Friends of Littleover Parks

Friends of Littleover Parks volunteers help care for and improve the parks in Littleover and Blagreaves, working in collaboration with Derby Parks.

Caring for our local green spaces means protecting wildlife, preserving nature, and ensuring parks remain welcoming for future generations. In 2024, our volunteers helped plant flowers, maintain pathways, and safeguard biodiversity in places like Sunnysdale Local Nature Reserve, Clemson's Park, and Millennium Wood.

You don't need experience to get involved! Whether it's light gardening, litter picking, or simply sharing ideas, every contribution helps keep our environment thriving. It's also a great way to meet new people, enjoy fresh air, and give back to your community.

To find out more or get involved, visit www.linktr.ee/LittleoverParks
email LittleoverParks@live.co.uk

Or keep an eye on the community noticeboards around Littleover and Blagreaves

Let's work together to make a lasting difference for nature, parks, and people

If you encounter any issues in our parks, please do report them to Derby Parks

Email: parks@derby.gov.uk

Telephone: **01332 640789**

or the Police on **101** if appropriate



ReCreate

Are you creative but never seem to get your materials out?

Would you consider yourself uncreative, but would like to be?

Would you like a place where together we can explore our God given creativity in a friendly and encouraging atmosphere?

*Maybe ReCreate could be
the place for you?*

You can work on your own projects or engage in a suggested activity. Space and resources (and your imagination) will be the only limitations to the range of creative activities we can share in together. Bring your own materials to use and share if you can. We have a basic range of frequently used materials for those who have none.

Let's explore our God given creativity

5 December – Gift tags

19 December – bring your own projects

Please bring your own drink.

**9.50am to 11.30am
St Peter's Hub Large Hall**

For more information contact:

Carole

lesncarole15@gmail.com

Joy

joypomroy@yahoo.co.uk

Donate with Church Family Christmas Card

Christmas costs continue to rise and we are all looking for ways of spending wisely. The Creation Care team would love for you to join in the Church Family Christmas Card – you add your greeting to the large card on display and then donate the money that you would have otherwise spent on cards. It breaks the cycle of – you gave me a card, so I have to give you a card – and the money saved on cards will be donated to a UK Eco Christian charity. Card designed by Peter Maybury



Bereavement Service on 9 November

While we know that death is part of life, losing the people we love can be very difficult and after the initial rush of sympathy it can be hard to find people to understand your grief.

Every year, on Remembrance Sunday we hold a Bereavement Service and invite those who are living with the reality of life without someone they love.

During the service there is an opportunity to light a candle in remembrance and then all the main lights are extinguished and in the flickering candlelight names are read aloud. While this is never an easy service it is always a privilege to gather with others to remember.



Open the Book – stories from the Bible

The Open the Book team go into St Peter's School once a month to share stories from the Bible. Using costumes, basic props, drama and lots of laughter they help the children explore the story and what it could mean for them today. The children LOVE IT!

Here are Richard and David – having told the story of Jacob and Esau (Esau the red headed hairy man who was cheated out of his inheritance). It also happened to be David's 60th birthday, so double celebration!

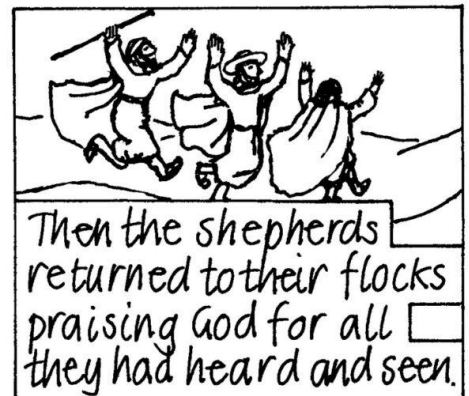


Bible Bite

A short story from the Bible

It can be read in the Bible in
Luke chapter 2 verses 8 to 20

Shepherds were paid to look after the flocks
out on the hillside. Uneducated and rough,
they were usually avoided, or overlooked.



Hub Bookings Manager Vacancy

Our first manager Mary Edwards has been a tremendous success, but due to family circumstances she is sadly unable to continue in the role.



So, we are now looking for a new person to manage bookings at St Peter's and St Andrew's Hubs. You would need to deal with prospective hirers, handle paperwork and be available with keys as needed.

This is a part-time post at four hours per week, averaged out over the month as some weeks will be busier than others. You will need to be computer literate and have a mobile available. We pay the Living Wage and a pension scheme is available.



For a fuller role description please go to www.stpeterlittleover.org.uk for more information. Or call 01332 767802.

Mission Giving increase

Following our review of how and where we support mission – something we do every three years – we have increased how much we give from £7,500 to £10,000. This has allowed us to take on some new partners.

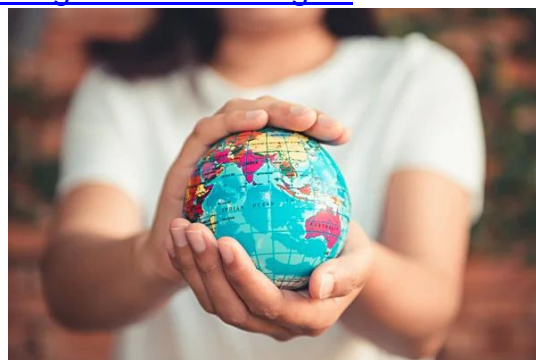
Locally we will support the work of Upbeat Communities, a Derby based Christian charity that provides support to refugees and asylum seekers at different stages of their journeys.

www.upbeatcommunities.org



Nationally, we will be supporting the work of Green Christian who have been helping our own Creation Care team with ideas and resources.

www.greenchristian.org.uk



And finally, we will be working with CMS to find an additional overseas mission worker to support and pray for. We currently work with Tim and Kate Lee of Jigsaw who are part of CMS, so it'll be great to prayerfully find someone new.

www.churchmissionsociety.org

Mission Update

Our Mission Partners

Contact them, pray for them

Juan Carlos & Penny de Marces – in Peru

Reynaldo Moron 215, Urb. Vista Alegre, Surco, Lima 15039 PERU psmarcesinlima@gmail.com
Juan Carlos is the pastor for Jesús el Nazareno, Cathedral Dean and Vicar General to the Diocese; Penny is now lay leader for JEN and has diocesan responsibility for children's ministry.

Tim & Kate Lee – (CMS) timkatelee@yahoo.com

Jigsaw Kids Ministries UK, Stonecheck, Main Street, Milnthorpe, Cumbria, LA7 7QZ
Tim and family are back in the UK but continuing to work with Jigsaw in the Philippines.

Bible Society www.biblesociety.org.uk

Translating, printing and distributing Bibles to people across the world.

Open Doors www.opendoorsuk.org

Supporting over 200 million Christians worldwide who experience extreme persecution for their faith.

PASH Kenya www.pashuk.org.uk

c/o 2 Inglewood Ave, Mickleover, Derby DE3 0RT
PASH supports the work of churches, schools, farmers and communities in Kenya.

Tearfund www.tearfund.org

100 Church Rd, Teddington TW11 8QE
Working in God's name across the world to bring relief to the poorest communities and fight for justice.

Care for the Family www.careforthefamily.org.uk

A national charity which aims to promote strong family life and to help those who face family difficulties through marriage, parenting or bereavement.

Derby City Mission www.derbycitymission.org.uk

10 Normanton Road Derby DE1 2GW
Phone: 01332 460346

Supporting homeless people and those on the margins of society in the City through the Nightshelter, Jubilee Centre (Debt and Advice Support) and Foodbank; also Street Pastors. Each December we support Christmas Connection at the Gift Service – providing gifts for children who would otherwise receive nothing.

Borderline Arts www.borderlinearts.org

119 Osmaston Road, Derby DE1 2GD
A Derby charity supporting people with Borderline Personality Disorder through a range of arts courses, workshops and support.

Open Doors

Supporting persecuted Christians

Christians don't expect change in Iraq

The elections in Iraq have passed, the results released. However, despite some details which bring hope, not much change is expected by Iraqi citizens – especially Christians. Please pray for God's guiding hand over leaders as they progress in their plans whilst the people of Iraq await further announcements.

After the elections on 11 November, the country has been waiting with anticipation for the results. However, the outcome is not likely to bring much change for believers in the country, nor to its systems in general, and the future is not expected to be much different from the experience of minorities at present.

Iraqi voters elected the 329 members for the Council of Representatives out of over 7700 candidates from around 70 political parties. The winner was the party of the current Prime Minister, Mohammed Shia al-Sudani, who gained 46 out of 329 seats. However, the political setup in Iraq means that the party will have to form a coalition with other parties to establish a new government.

Glimmers of hope

Christians' political representation lies in the five seats which are given to minorities – known as 'quota seats'. The Babylon Movement, a group suspected to be backed by Iranian militia and widely unsupported by believers, only gained two out of the five seats this year. For some Christians, this is a glimmer of hope – four years ago, the Movement secured four out of the five seats. The other three seats this year went to independent Christian candidates.

Another encouragement lies in the fact that more Iraqi citizens turned out to vote this year than in recent years. The Independent High Electoral Commission (IHEC) announced that 56.1% of eligible citizens voted in the election.

Prayers for the future

As stated, the winning party must now begin the process of forming a coalition government following the no-majority outcome. This procedure can take a long time, and so the real impact of the election results for Christians remains clouded. Concerns for just procedure remain at the forefront of believers' minds and many church leaders are pleading against interference in the election results.

"It is too early to talk about changes in the country," an Iraqi believer affirms. "In general, we think there will be no change because the same big parties are in control. Often their speeches before and after the elections are different. So, Christians are waiting to see how the new government will be formed. We hope and pray that the people who won the quota seats will truly be a voice for Christians."



Iraq stands at #17 on the World Watch List and persecution is a constant reality for our brothers and sisters there. Please continue to remember them in your prayers as changes begin to unfold in the lives of its people.

Please pray

- That a new and stable coalition will be formed which will support a better future for all Iraqi citizens
- That the voice of Christians will be heard and considered in parliament
- For the Lord's gracious guiding of the hearts of Iraq's leaders.

Please write to your local MP to invite them to the World Watch List Launch in Parliament on 14 January 2026. Go to

www.opendoorsuk.org/persecution/

Update from Jigsaw

Supporting families in the Philippines

We regularly see Tim and Kate Lee at St Peter's and hear about their work with Jigsaw Kids Ministry supporting children and families in Manila in the Philippines.

They travelled over in July this year, which was especially exciting for Kate as she had not visited for nine years. She was there to offer training for the new Kindergarten/ Early Years project which they hope to launch in January 2026. The training focused on key areas of learning and Kate guided the staff in setting up play spaces to help the children learn. The training ended with model early years club to help the staff put their new found knowledge into practise.



Funding was also required for this new initiative and so Tim and another colleague Duncan did a skydive with Skydive North West. Between them they raised over £8k and you can still make a donation if you wish



Mobile Footcare Service

- Toe nail trim/thinning & file
- Corn and hard-skin removal
- Verruca & fungal nail treatment
- Ingrowing toenail treatment
- Cracked heel treatment
- Diabetic footcare
- Mini manicure
- Gel nail.

Francisca Hannah SAC Dip RFHP
07479 649444

francisahannah@hotmail.co.uk

Registered, fully insured
Foot Health Practitioner

Littleover Women's Institute

2nd Thursday of the month

Littleover Social Club at 7.30pm

Members new and old welcome.

Come along and see what we do!

Further information from

Margaret Williams on 767354



Daisychain Benevolent Fund

Burton Road, Derby (01332 208225)

Supporting Teenage Cancer Trust
Children's Ward, Derby

Always require good quality clothing and
Bric-A-Brac. Please bring donations to
the shop only during opening times.

BACK PAIN

If you are suffering from low back pain or neck pain, you should consider consulting a registered chiropractor.

Many people are turning to chiropractic for the treatment of these and other muscle and joint problems.

Treatment is given after a thorough case history and a full examination.

Chiropractic aims to improve the function of your muscles and joints.

Treatment is often followed by a rehabilitation plan which may help to improve flexibility and assist in preventing a recurrence of the problem.

**MJ Whatling, DC, MSc, FCC
& Associates**

**LITTLEOVER
CHIROPRACTIC CLINIC
(Est. 1988)**

**569a Burton Road, Littleover
DERBY, DE23 6FW**

Tel: 01332 768408

www.littleoverchiropractic.co.uk

 **CHIROPRACTIC**
...so often the answer

Mrs C's Tea Cosy



Breakfast * Toasties * Sandwiches * Cakes

we also cater for buffets and business lunches

also on Facebook * Still dog friendly

Monday to Friday 8am till 2:30pm

Saturday 8:30am till 12:30pm

4 Normanton Lane Littleover DE23 6GP
(next to the church gates) Tel: 07903 761151



MayDay Solutions

152 Oaklands Ave.
Littleover Derby DE23 2QN.
In business for over 20 years.

Phone: 01332-270646
Mob: 07876243903
Email: charlie.elston@gmail.com

Charlie Elston

For all your PC needs Internet issues repairs, faults ,networking, advice and re-instals. Rebuilds and upgrades to much faster SSD drives etc. Which loads windows in seconds not in minutes.



Organization

EST.2025

Derby, UK.

Build For Living

Small Building Works
Let's Discuss Your Options



Lee Smith, Tel: 07730397437, Email: Buildingforliving@gmail.com

Who are Build For Living?

From a building family, I became a cathedral stonemason. Currently experienced in a range of building jobs including: fixing squeaking stairs, laminate floors, floor joists, fencing, boarding out lofts, kitchen fitting, tiling, repairing church walls and steps, decking, patios, raised garden beds, light fittings, and much more!

*Previously a youthworker and mental health nurse, I appreciate the importance of honesty, clear communication and reliability.
Fully DBS checked.*

If you would like to discuss a job, your options, and my availability give me a call. I look forward to hearing from you.

FOODBANK



Please drop any food off at
The Vicarage and it will be
taken to the Derby
Food4Thought Hub to be
distributed across the city.

priority semi skimmed milk

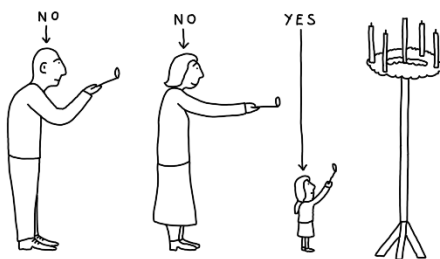


Knit and Natter

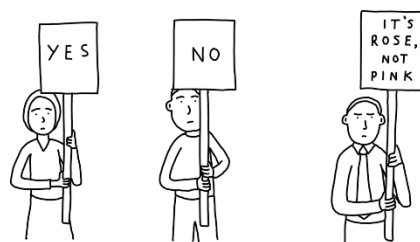
*Every Wednesday 2.15pm
In St Peter's Hub*

*for those who can knit like
grandma and those who've
no idea – everyone welcome!
Call Di on 01332 763938*

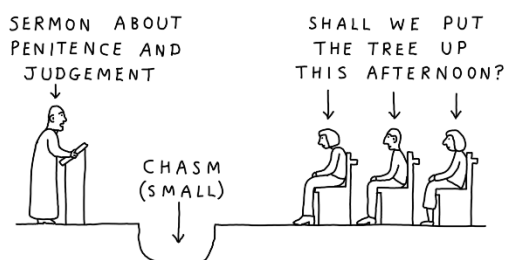
ADVENT CONTROVERSIES



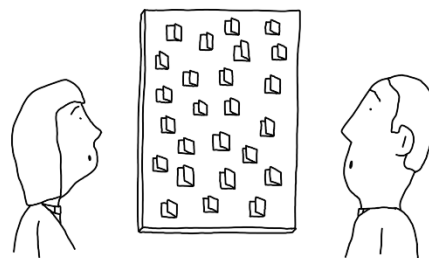
WHO WILL LIGHT THE CANDLES
ON THE ADVENT WREATH?



SHOULD THE WREATH HAVE
ONE PINK CANDLE?



WHETHER TO PREACH ON
CHALLENGING ADVENT THEMES



WHO COULD HAVE EATEN THE
VESTRY ADVENT CALENDAR CHOCOLATES?

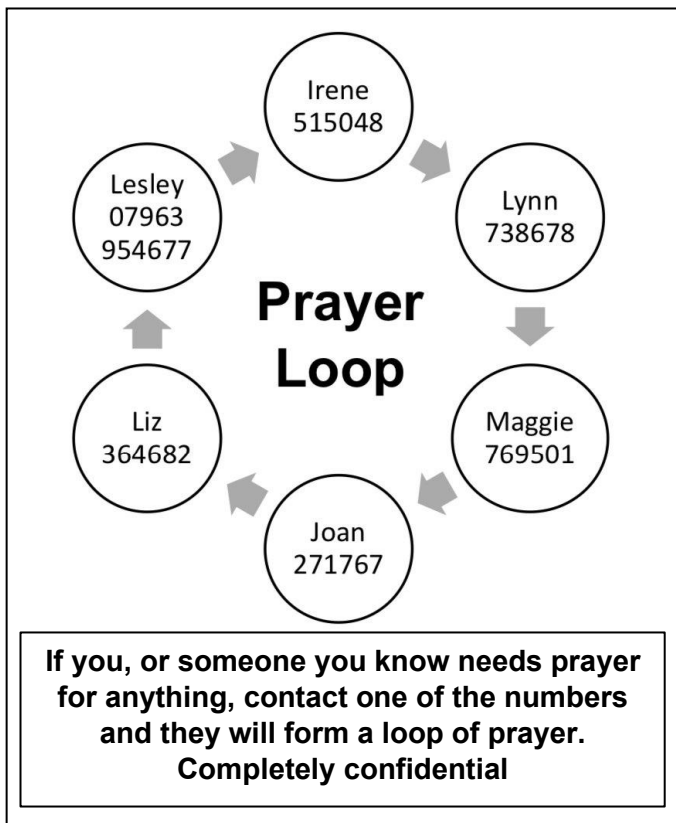
Answers to November “Garden and Nature Programmes” Quiz:

1. Gardener's world 2. Countryfile 3. Ground Force 4. Spring Watch 5. Chelsea Flower Show 6. Art of the garden
7. On your farm 8. Beechgrove 9. Love your garden 10. Garden rescue 11. Gardener's Question Time 12. Coast
13. Farming today 14. Escape to the farm 15. The great northern garden build 16. Glorious garden from above
17. Great garden revolution 18. A year at Kew 19. Blue planet 20. Winter Watch 21. The Autistic Gardener
22. Victorian Kitchen garden 23. Your garden made perfect 24. Bid dreams, small spaces 25. March of the penguins
26. Filthy garden SOS 27. This farming life 28. Great British garden revival 29. The Wild gardener 30. The green planet
31. Around the world in 80 gardens 32. The flying gardener 33. Life on Earth 34. The big flower fight 35. The gorilla garden
36. Monty Don's Japanese gardens 37. Frozen planet 38. The Instant Gardener 39. How does your garden grow
40. The Big Allotment Challenge

Words containing “ATE” Quiz (some anagrams)

Questions	Answers
1. Work out mathematically	
2. Put up with	
3. A posh cake	
4. Evaluate council tax	
5. Country or housing -----	
6. Dice treason	
7. Romantic assignation in diary	
8. Weather	
9. Put your foot down to go faster	
10. Cool cheat	
11. He was a very hungry insect	
12. Art gallery in Liverpool and St. Ives	
13. Great sty	
14. Flat tableland	
15. Excite mutilates	
16. Entrance found in yoga teacher	
17. ----- Girl by Madonna in 1985	
18. Celebrate a memory	
19. Grim tea	
20. Overdue birthday wishes	
21. Bring into existence	
22. Classification or subject	
23. Delighted	
24. Not professional	
25. Provide food for	
26. Bridge over troubled -----, Simon & Garfunkel 1970	
27. Formal discussion	
28. ----- Sunset by the Kinks in 1967	
29. Explain in more detail	
30. Stage tan	
31. Suitable	
32. Lift up high	
33. ---- Bush sang Wuthering Heights in 1978	
34. Not on time or deceased	
35. Trained tonic	
36. Treat as equivalent	
37. Pretend to be someone else	
38. Near malt	
39. One of Gilbert & Sullivan's men of Penzance	
40. Paint a mule	

Prayer Requests



The Pastoral Team

Looking out for church family
– available to listen, care
and pray with you.

Talk to Alicia, Emma, Jason, Lianne,
Joan or David Ditch

Members of PCC

Alicia Dring
Emma Mallord
Jason Kennedy
Lianne Green
Chris Jones
Helene Roe
David Barker
Julie Scott

Charlie Elston
Tim Standley
Bill Browne
Heather Newstead
Ann Vincent
Peter Vincent
Ali Marsh-Davies

Home Groups

Home Groups are an opportunity to meet with a small group of people, in someone's home, to look at the Bible, pray, share, learn and grow together. Responsibilities are shared and members support one another as part of growing in discipleship and fellowship. If you'd like to join a group, please speak to Alicia on 767802 or contact a leader directly. Some are currently meeting online.

Learning Together Mon 2.30pm weekly

Led by: Robin & Terry Wood

We enjoy lively and thought-provoking discussions as well as social events and fundraising.

Pilgrims Mon 7.30pm fortnightly

Led by: Doreen & John Bird

Walking together on our journey of faith.

New Beginnings Tue 9.45am weekly

Led by: Bill & Maggie Browne

Our aim is to encourage one another to grow in Christ. As we read the Bible, share, pray, worship and laugh together, we stir each other up in our faith and our Christian walk.

Queen's Drive Tues 7.30pm weekly

Led by: Liz & Phil Eley

A diverse group interested in supporting people in mission.

Sticking Point Wed 6.45pm fortnightly

Led by: John Bradley

A group of mature Christians who support each other spiritually, with hospitality being a particular strength.

Route 66 Tues 7.30pm weekly

Led by: Jon & Jenny Russell

Named after 66 books in the Bible and taking the journey with Jesus together.

StAND Wed 1pm fortnightly

Led by the group

A group primarily of people who used to worship at St Andrew's and now part of St Peter's – always learning and growing together, praying for Blagreaves.

Platform Wed 7.15pm weekly

Led by: Rachel Whitehorn

We support each other in our walk with God, with an emphasis on practical application of Scripture.

ReLENTless Wed 7.30pm fortnightly

Led by: Helen Homes & Deidre Cheetham

Following a one off Lent group (hence name) this group is loving, plain speaking and full of laughter. Everyone is encouraged to fully participate.

Parish Activities

SUNDAY

10am Service in church or on Zoom

MONDAY

THE CROSSED KEYS CAFÉ – 9.30am to 12.30pm

(last café 15 Dec, back on 5 Jan 26)

TIDDLYWINKS Stay and Play 1.30pm- 2.45pm

(last group 15 Dec, back on 5 Jan 26)

TUESDAY

LUNCH CLUB – 12 noon till 2pm

(last lunch 16 Dec, back on 13 Jan 26)

St Peter's Hub, Normanton Lane. Guests welcome, help needed.

WEDNESDAY

MIDWEEK HOLY COMMUNION at 10.30am in church

KNIT & NATTER 2.15pm-4.15pm – in St Peter's Hub

Bring along your knitting, crochet or embroidery and chat with others as you create your latest masterpiece. Or if you're a beginner, learn from other members. Final 17 Dec, back 7 Jan 26

HOME GROUPS see opposite – some are meeting online.

THURSDAY

FRIDAY

9.50am RE-CREATE – 1st and 3rd weeks of the month

St Peter's Hub. A safe space to explore faith and creativity - all welcome Returns 16 Jan 26

How can you serve at St Peter's?

We don't need volunteers in the Parish of Littleover & Blagreaves, rather we have a hope that all enrolled members of our church family will **serve** the wider work of the churches and community and not just rock up on a Sunday.

How could you serve the work of our parish? Could you chat with someone who is isolated at home? Help with our children's work or help keep the churchyard looking spruce? Make refreshments? Can you pray to see God at work in our parishes? We're not asking for hours of your time – if we all do a little then the tasks are shared and we can see lives change through the power of the Holy Spirit.

Talk to Alicia, Jason, Emma or Lianne.

Special Occasions

Baptism or Thanksgiving

Please see our special booklet on the website or contact the church office on 01332 767802 for a copy. We want to get to know you before booking a date, so we look forward to meeting you in church.

Marriage & Banns

Congratulations! The rules are now different and you don't have to live in the parish any more but can be married at St Peter's if you have a qualifying connection. For more information, contact the office, look at the church website OR checkout

www.yourchurchwedding.org

We are happy to talk to you about dates, including midweek weddings.

Funerals

Arrangements are normally made through your undertaker and we can officiate at services in church, at the Crematorium and local municipal cemeteries.

Churchyard

There are no longer any new grave spaces, but we can bury ashes in our Garden of Remembrance. No memorials are allowed on the site but an entry will be made in the Book of Remembrance in the church. Please inform the undertaker as early as possible of your wishes. Plots cannot be booked in advance. Please be aware that maintenance of the churchyard is done by volunteers and contractors which are paid for by the church family. If you can care for your own area, that helps a great deal.

UNIFORMED GROUPS

SQUIRRELS – for children aged 4-6

Tuesday 4.45-5.45pm at

Scout HQ on Brayfield Road

Contact: Stephen Hallam on:

174derbyscouting@gmail.com



BEAVERS - for children aged 6-8

Tuesday 5.45-6.45pm at Scout HQ on Brayfield Road

Contact: Kathryn Hallam on:

174derbyscouting@gmail.com

CUBS - for children aged 8-10

Tuesday 5.45-6.45 at Scout HQ on Brayfield Road

Contact: Kathryn Hallam on:

174derbyscouting@gmail.com

SCOUTS - for children aged 10-14

Tuesday 7.15-8.15 at Scout HQ on Brayfield Road

Contact: Kathryn Hallam on:

174derbyscouting@gmail.com

Notice Board – December 2025

1	Monday	9.30am	Crossed Keys Café	St Peter's Hub
		1.30pm	Clergy & Wider Staff meeting	Church
		1.30pm	Tiddlywinks Stay & Play	St Peter's Hub
2	Tuesday	11.30am	Lunch Club & Service	St Peter's Hub
3	Wednesday	10.30am	Holy Communion	Church
		2.15pm	Knit & Natter	St Peter's Hub
4	Thursday	1.00pm	Community Choir Project Remini-Sing	Church
		7.30pm	Worship Group	Church
5	Friday	9.50am	ReCreate	St Peter's Hub
		11.30am	Drop in Café	St Andrew's Hub
		3.30pm	St Peter's School Christmas Fair	St Peter's School
6	Saturday			
7	Sunday	Second Sunday of Advent		
		10.00am	All Age Gift Service	Church & Zoom
8	Monday	9.30am	Crossed Keys Café	St Peter's Hub
		1.30pm	Tiddlywinks Stay & Play	St Peter's Hub
		8.00pm	Raise a Glass	The White Swan
9	Tuesday	12.00pm	Lunch Club	St Peter's Hub
		3.00pm	Heatherton House Carol Singing	Heatherton House
10	Wednesday	10.30am	Holy Communion	Church
		12.45pm	StAnd Homegroup	St Andrew's Hub
		2.00pm	Christmas Tree Decorating	Church
		2.15pm	Knit & Natter	St Peter's Hub
		2.45pm	Youth Hot Chocolate & Toast	St Andrew's Hub
11	Thursday	2.00pm	Dementia Friendly Carols & Communion Service	Church
		3.00pm	Community Choir Project Remini-Sing Concert	Church
		7.30pm	Worship Group	Church
		7.30pm	Thirsty Thursday	The White Swan
12	Friday	11.30am	Drop in Café	St Andrew's Hub
		2.00pm	MAP Prayers	Jenny C's House
13	Saturday			
14	Sunday	Third Sunday of Advent		
		10.00am	Holy Communion	Church & Zoom
15	Monday	7.00pm	Carols by Candlelight	Church
		9.30am	Crossed Keys Café	St Peter's Hub
		1.30pm	Tiddlywinks Stay & Play	St Peter's Hub
16	Tuesday	9.00am	St Peter's School Service	Church
		11.00am	Brookfields Care Home Carol Singing	Brookfields Care Home
		11.30am	Lunch Club Christmas Lunch	St Peter's Hub
17	Wednesday	9.15am	George V Pre-school Nativity Rehearsal	Church
		10.15am	Cedar Tree Care home Carol Singing	Cedar Tree Care Home
		10.30am	Holy Communion	Church
		2.00pm	Derby Heights Care Home Carol Singing	Derby Heights
		2.15pm	Knit & Natter	St Peter's Hub
18	Thursday	11.00am	King George V Pre-school Nativity	Church
		5.45pm	Carol Singing at Oaklands pub	The Oaklands
		7.30pm	Worship Group	Church
		8.00pm	Carol Singing at The White Swan	The White Swan
19	Friday	9.50am	ReCreate	St Peter's Hub
		11.30am	Drop in Café	St Andrew's Hub
20	Saturday	10.30am	Carols singing at the Co-op	Co-Op
21	Sunday	Fourth Sunday of Advent		
		10.00am	Family Nativity Service	Church & Zoom
22	Monday			
23	Tuesday			
24	Wednesday	3.00pm	Christingle Service	Church
		5.00pm	Christingle Service	Church
		11.15pm	Midnight Holy Communion	Church
25	Thursday	8.00am	Spoken Holy Communion	Church
		10.00am	All Age Holy Communion	Church & Zoom
26	Friday			
27	Saturday			
28	Sunday	First Sunday of Christmas		
		10.00am	Joint spoken Holy Communion service	Church
29	Monday			
30	Tuesday			
31	Wednesday	10.30am	Holy Communion	Church