

# Keyhole

November  
2023  
50p

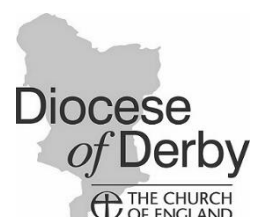
**Magazine of St Peter's Church  
Parish of Littleover & Blagreaves Derby**

Part of Littleover & Blagreaves Churches Together



[www.stpeterlittleover.org.uk](http://www.stpeterlittleover.org.uk)

Phone: 01332 767802



# How to contact us



**01332 767802**



**35 Church Street  
Littleover Derby  
DE23 6GF**



[office@stpeterlittleover.org.uk](mailto:office@stpeterlittleover.org.uk)



## In Person at The Parish Office

Office open Mon, Tue, Thu & Fri 9.30am-2.30pm

Church Administrator: Iona Hague

[Office@stpeterlittleover.org.uk](mailto:Office@stpeterlittleover.org.uk)

# Who's Who

## Vicar

Revd Alicia Dring 767802  
[alicia@stpeterlittleover.org.uk](mailto:alicia@stpeterlittleover.org.uk)

## Curates

Revd Rachael Brooks  
07305 140573  
[rachael@stpeterlittleover.org.uk](mailto:rachael@stpeterlittleover.org.uk)

Revd Emma Mallord  
Phone 07752 645496  
[emma@stpeterlittleover.org.uk](mailto:emma@stpeterlittleover.org.uk)

## Associate Priest

Revd Jason Kennedy  
07572 987083  
[jason@stpeterlittleover.org.uk](mailto:jason@stpeterlittleover.org.uk)

## Retired Clergy

Revd Jenny Cooper 761783  
[jalcooper@btinternet.com](mailto:jalcooper@btinternet.com)

Revd David Ditch 271767

## Readers

Paul Taylor 609337  
Carole Dickinson 766855

## Church Wardens

Jim Britland 489940  
[mgbgtjim@gmail.com](mailto:mgbgtjim@gmail.com)

Chris Jones 776634  
[chris-jones-derby@outlook.com](mailto:chris-jones-derby@outlook.com)

## PCC Secretary

Mrs Julie Scott  
[rsjulescott@gmail.com](mailto:rsjulescott@gmail.com)

## Church Treasurer

Lesley Edwards  
07963 954677  
[treasurer@stpeterlittleover.org.uk](mailto:treasurer@stpeterlittleover.org.uk)

## Gift Aid Secretary

Mr Paul Cheetham  
[office@stpeterlittleover.org.uk](mailto:office@stpeterlittleover.org.uk)

## St Peter's Junior School

Headteacher  
Mr Frazer Smith 767158  
[frazer.smith@stpeters.derby.sch.uk](mailto:frazer.smith@stpeters.derby.sch.uk)

## Keyhole Magazine

### Editorial Team

[office@stpeterlittleover.org.uk](mailto:office@stpeterlittleover.org.uk)

The articles and viewpoints expressed in this magazine are not necessarily those of the Vicar or the PCC.

**Deadline** for next edition – by email before the **10<sup>th</sup>** of the previous month.

A colour version of Keyhole can be found on the Church website:

[www.stpeterlittleover.org.uk](http://www.stpeterlittleover.org.uk)

# From the Vicarage

Dear all,

As we take another step toward winter, we are reminded of the power of light in the darkness. Jesus is often described as the Light of the World – but what difference can His light make?

As we come to Remembrance Sunday, we are reminded of all who have given their lives and their mobility in conflicts across the years. We give thanks for those who died and we remember those who live with injury that is a permanent reminder of their willingness to serve for justice and peace.

War continues to rage in the Middle East – in God's Holy Land – and while there is no quick fix solution, we steadfastly pray for mercy for the innocent and an end to vengeance. An eye for an eye only leaves us blind. And at the same time there is still conflict in Ukraine, refugees continue to move around the globe seeking refuge and peace for their shattered lives

So how do we offer hope?  
How do we keep a light shining in the darkness that they might know they are not alone? The reality is that we can campaign and pray but the only one who can bring a lasting peace into the hearts of those who seek to destroy, is God himself. Only He has the power to change the spirit of a person.

We see such change throughout Jesus' ministry – from Matthew the tax collector, to the disciples leaving behind their nets. He changed them forever, and His promise to always be with us through his Holy Spirit is something many of us have experienced in our own lives. Being a Christian does not exempt you from the pain and distress of life, you just know that you are not alone, because Jesus walks alongside us.

Someone once said that when you light a candle in a dark room, the darkness runs away from the light. So it can be with the power and presence of God – his light can chase away our darkness and help us to see what is good and to bring us hope for the future.

November also sees our Bereavement Service at 4pm on the afternoon of Remembrance Sunday. In this service we light a candle for those we have loved and lost to death. Their light shines in the centre of our church, chasing away the darkness, flickering with a determination that shows us love does not die, it just stays with us in a different way.

Whatever darkness you carry with you today – may you know the light, love and peace of Christ shine in your heart.

With blessings,

*Alicia*

## From the October 2023 Registers

**Funerals**

**30 October**

**Shirley Chaffey**

# Tiddlywinks

stay  
and  
play



**1.30pm – 2.45pm**

**Mondays in term time**

St Peter's Hub

Toys, songs, games,  
crafts and refreshments.

## The Crossed Keys Café

St Peter's Hub

**MONDAYS**

**9.30am – 12noon**



**Everyone  
welcome**

## Shirley Chaffey dies



Shirley was a faithful member of St Peter's for many years and was active in prayer and visiting. Sadly, she developed dementia and had to move to full-time care at Willowcroft House in Spondon – run by Christian charity MHA care group. The home helped her continue to worship and Rev Paul Hygate, who is chaplain there will take her funeral service alongside St Peter's clergy and her family on Monday 30 October 12.30pm in church.

## Les Wormsley death



Les Wormsley, always ready with a smile and a twinkle in his eye lost his wife Winifred at the end of last year after over 70 years of marriage, and a few months ago, he too moved to Willowcroft House in Spondon. Sadly he suffered a stroke and later died at the Derby Royal just short of his 95<sup>th</sup> birthday. His funeral will be in St Peter's on Thursday 2 November at 12 noon.



# Harvest Festival Generosity

Harvest was celebrated once again with great joy and tremendous generosity from our schools – St Peter's and George V Pre-School both came into church – as well as our wider church family.

Messy Harvest gave us a wonderful banner for the worship area and we had some fabulous floral displays around the church.

All the food went to the Food 4 Thought food hub who receive our weekly contributions of meat and milk. They continue to express their thanks for our ongoing support as they supply foodbanks around the city.



At the end of the Harvest service there was a meeting of the Children & Young People's team, leaving a number of under 10s in the church (with adults to keep an eye out) and they made this floor display in the chancel with the flags they had been waving at the end of the service – the older children encouraged the younger ones – it was a special moment of them expressing their praise in their own way. (see above right)

## THIRSTY THURSDAY



**at The White Swan  
Littleover**

**Thu 9 Nov 7.30pm**

Call Steve for more info  
07790 431090

## CHURCHYARD CLEAN UP



**Resting for the Winter ...**

## ACCESS IN CHURCH

There are wheelchairs available in Church and there are two BackFriends (support frames for those with sore backs) which fold out onto the pews. For those with hearing difficulties, we have a Loop Transmission System, covering the whole church. Hearing aids adjusted to stop 'T' will pick up the service directly. Ask vergers for information.



## Jonathon Hemingray Sculpture

- Handmade wooden sculptures – tactile, expressive and fluid – demonstrating the grace and love of God
- Suitable for ordination, baptism, wedding, birthday, anniversary or in memoriam
- Based in Derby so local collection is easy
- Other designs are also available please take a look at my website or call for a specific commission.

[www.jonathonhemingray.co.uk](http://www.jonathonhemingray.co.uk)

[jonathonhemingray@hotmail.com](mailto:jonathonhemingray@hotmail.com)

M 07779 314342

[www.etsy.com/uk/shop/JonathonCrosses](http://www.etsy.com/uk/shop/JonathonCrosses)



# Sad death of our friend Phil Rollinson



Phil Rollinson has faithfully served St Peter's for many years as warden, worship leader, reader, chair of school governors, home group leader and leader of the Fabric Team.

Always cheerful and welcoming he had many years of experience of church life having grown up as a Vicar's son in the depths of Derbyshire.

Married to Angie and with three children and six grandchildren, their home on Glebe Rise was always open to anyone in need of a chat, rhubarb from the garden or just a cup of tea.

His faith was strong and he loved to be involved in services. However his failing health put a spanner in the works and over the last ten years he has been unable to maintain such an active role. Struggles with cancer and finally dementia meant he has gone home to heaven ahead of us and we are the poorer without him.



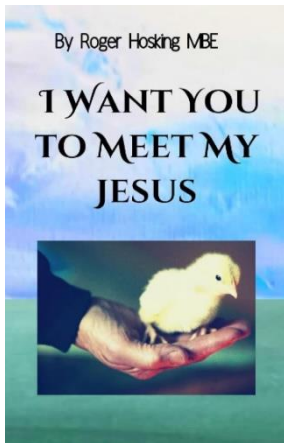
**Phil's funeral will be at St Peter's Church on Thursday 23 November at 12noon, followed by a reception in St Peter's Hub.**

## Messy Youth Sun 12 November 5pm

Our first session for our young people over the age of 12 will be on Sunday 12 November at 5pm in St Peter's Hub and will include food, games, challenges and time to get to know one another. It is hoped that Messy Youth will continue every 2<sup>nd</sup> Sunday of the month into the new year. If you need more information please contact Deidre Cheetham on [deidre195@gmail.com](mailto:deidre195@gmail.com)



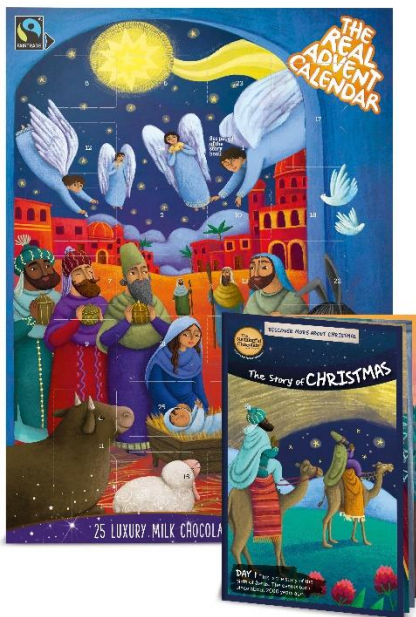
# Happy Hens Founder NEW Book



Roger and Beryl Hosking gave many years to the Etwall based farm Happy Hens – offering home and ongoing support to many struggling and broken people as they joined them in running the farm. Here at St Peter's we sold Happy Hens eggs for many years. During lockdown Roger finally managed to finish his book – I want you to meet my Jesus – which is now available on Amazon. “Millions of people are lost and confused – this is an incredible yet simple story of one many's journey to find Jesus; who, over 40 years, has passed on the love that he found and has seen the transformation of hundreds of broken people which led him to write this book.”

Copies can be purchased from Amazon for £10.00

## Real Advent Calendar is back



The ever-popular Christian based Advent Calendar is back for 2023 at 2022 prices – and there aren't many places you'll hear that.

You can order your own **Advent Calendar** filled with Fairtrade chocolate for just **£4.50**.

OR

**Host of Angels Tree Decorations** – six chocolate angels with a sticker set and activity poster **£4.99**

OR

Christmas  **blessings bar** – simply chocolate **£3**

OR

**Meaningful Chocolate Orange** – with Christingle features as well as thick chocolate with a great orange taste **£3.50**

What sets these items apart from most of the chocolate related Christmas items in the shops is that these all feature the Christian story – perfect to share with family, friends and neighbours, maybe alongside an invitation to Christmas services at church!

You can also help to pay for calendars that we will be gifting as a church – to St Peter's School, the Pre-School at St Andrew's and to our Messy Church families. If you wish to make a donation, please mark this clearly so we don't accidentally order you a calendar instead!

Please contact Iona in the office – [office@stpeterlittleover.org.uk](mailto:office@stpeterlittleover.org.uk) – with your order. Or fill out the order form in church in the coffee area.

**Payment on collection. Closing date for orders: Sunday 12 November.**



# Rachael to move across the City



It is with great delight – and some selfish sadness – that we announce that the Reverend Rachael Brooks, curate of St Peter's and St Andrew's since 2020 will be moving on at the end of November to serve as Associate Minister to the parishes of St Edmund's Allestree, St Matthew's Darley Abbey, St Nicholas' Allestree and St Paul's Quarndon.

She will be working alongside Reverend Sarah Watson who will be Priest in Charge and they will work together across the three villages and four churches sharing their expertise and ministry where needed.

Rachael joined us during Covid which led to a rather peculiar curacy – much of the first few months were online – but she has established herself with great compassion and kindness, bringing both grace and innovation to our parish. Helping to establish the Creation Care team, this is now a firm part of our mission, she has also steered and blessed the All Age Team and Children and Young People's team. Earlier this year Rachael spent some time on placement with St Edmund's and St Matthew's and it's great that working relationships are already established as she begins her new role.

Her final Sunday will probably be Christ the King on Sunday 26 November. If you would like to contribute to a farewell gift for Rachael, please address it to the office.

---

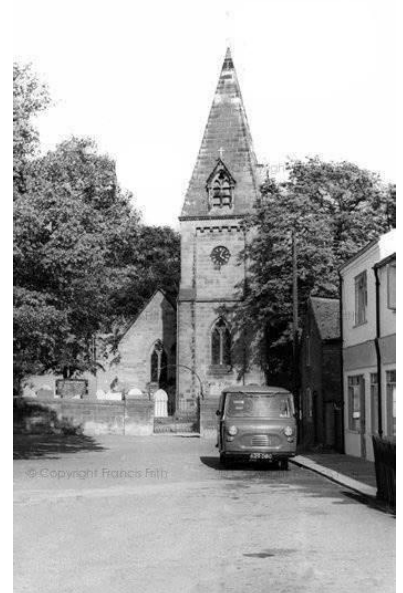
## Findern 160<sup>th</sup> Anniversary 4 & 5 November

This month, All Saint's Findern will celebrate 160 years of the church being rebuilt on the site of the original Saxon church.

The church will be open on Saturday 4 November from 10am to 3pm for visitors to come in and see old pictures of the village, find out more about the church and meet the team. Refreshments will also be available.

On Sunday 5 November at 10am there will be a celebratory Songs of Praise service to give thanks to God for the many blessings in the church and surrounding community.

On Saturday 25 November there will be a Christmas Fayre in the Village Hall to raise money for the church.



# Buen Camino! –triumphant walkers

As I write this, listening to the heavy rains and high winds of storm Babet outside, it is difficult to believe that only a short while ago, as part of our church walking group, I was walking the Camino pilgrimage in the 30 degrees heat of Spain. Our route followed the last 116 km or 72 miles of the French Way from Sarria in north west Spain to the Cathedral in the Galician city of Santiago de



Compostella. Catherine, Chris, Dave, Elaine, Linsey, Paul, Richard, Vic and I landed at Santiago Airport late evening on 26 September and were then driven to the starting point of our walk. The next morning, we set off on our walk back to Santiago de Compostella. Our adventure began with a photo shoot around the Sarria sign and prayers with Steve Hawkins, who is the new Pastor for Sarria and a friend of Dave and others at St Peter's. He is also a close relative, by marriage, of Jenny Cooper. It's a small world! Steve walked the first few miles with us, telling us about the area and his plans and hopes for his new role. His wife had kindly compiled a pocket prayer and knitted a keepsake for each of us to help us on our way. We walked around 23km that first day, up and down dale. Mainly up it seemed, along dirt tracks and through glorious scenery.



This set the scene for the next five days, each day we set off early to try and beat the midday heat and prayed before we left. Our path took us through many historic areas and some of the villages and hamlets that we walked through were as though they were from a different century. One farm house that we passed was close to the path, and the front garden, porch and yard were full of harvested squashes, sweetcorn kernels and pumpkins all laid out. Chickens and a big black Cockerel grubbed around.

We walked through the shade of Eucalyptus trees, by rivers, high up in the hills and through wide open spaces. The camaraderie within our team was great, together we survived very sore feet, aches and pains and tiredness. We laughed and enjoyed local delicacies together – well perhaps not the Octopus! We sang Ten Green Bottles as we walked along with a group of Americans and chatted to lots of other pilgrims from many different countries, each with their own stories and reasons for attempting the walk.

Buen Camino! Which means 'good way', is the pilgrim greeting and we said this and heard this many times each day. As pilgrims we each had a 'Credencial del Peregrino' a pilgrim's passport, and were tasked with getting at least two stamps on it each of the days that we were walking. This was to enable us to obtain a certificate confirming that the pilgrimage had been undertaken. Stamps were available from places of interest, some shops, cafes, churches and hotels along the way. They gave us an excuse to take in the sights and enjoy the local food and drink.





# return to Derby – sore but happy!



We also each carried a scallop shell with the cross of St James on it, another sign of the pilgrim. Scallops are fished locally and traditionally pilgrims would use the shells to scoop water out of streams and to hold food during the journey. The cross refers to the sword that killed St James and takes the shape of a Fleur-de-Lys. Its red colour represents Jesus's blood and the white background is a sign of purity. Historically, Crusaders carried the small sharp-edged crosses so that they could pray in the presence of the cross.

The last day of our walk was challenging, we were trying to beat the heat and some of us were full of cold and our feet were sore and tired. It seemed a very long way! We did it though and as we walked around the

edge of the airport and began to see glimpses of the city in the distance, we began to realise just what we had achieved.

Santiago de Compostella translates as 'St James in the field of the stars', and the star is another symbol of this pilgrimage. It refers to the lights that first revealed where the body of James the Apostle had been secretly buried. The cathedral now houses the tomb of St James and is extremely ornate. After collecting our certificates of completion, we visited the cathedral and with lots of other people from many different nationalities attended the pilgrim's mass.



Quite unexpectedly we also saw the swinging of the Botafumeiro. This is a large ornamental vessel of incense, originally used to fumigate the cathedral and get rid of the smell of the pilgrims! It is swung, up down and around at great speed by using some thick ropes on a pulley system. It was an awesome sight and looked quite dangerous for the eight operators who did a lot of ducking and diving whilst controlling it! This was certainly a trip to remember. The best bits for me were the sights and sounds and the history, the friendship within our group and of strangers, the large numbers of people happy to talk about their faith and the prayers that were shared with us and said for us, both in Spain and by our church family. Also, the great generosity of our church family who have given donations of £870 to date in recognition of our pilgrimage. This will be split between the Pash charity to buy bibles in Kenya and our Creation Care toilet twinning initiative.



We had two days sight-seeing in Santiago de Compostella and then it was time to fly home. A few days later I was walking through Sunnydale Park in Blagreaves and got into conversation with a couple visiting the area who were also out for a walk. The lady told me she was from Spain so I told her about the Camino and she said she has also done it! They were very interested in the connection with St Peter's church and as they left, she said 'Buen Camino'. It is indeed a small world!

*Written by Julie Scott on behalf of the walking group.*



## Littleover In Bloom

Our visit to Spalding was a great success. Littleover in Bloom winning a silver gilt, along with Jaquie McKenzie's colourful Best Front Garden, also being awarded a silver gilt. The Co-op funeral parlour, with their wonderful hanging baskets won a bronze award; thank you girls for serving the judges refreshments. Hannah Fields were awarded a well deserved, Judge's Award. Finally, the top marks this year went to, 'The White Swan', who were awarded a, 'Gold', and the title, 'best pub in the East Midlands'!! Very many thanks to all who took part. Also of course a huge thank you to our sponsors: The Green Room barbers, Littleover Grange Hall, Lymn's Funeral parlour, The Churches Together, P. Summers, Brookfield nursing home, Unite Union, Petrie Optometrists, Littleover Butcher's, Buzz Cut Barber, and Alan. We also need to thank, Peter Valentine for his artistic talent, Liam Firth for his help with the booklet, and last but not least John Warburton for keeping the grass looking beautifully groomed all year round. Many thanks too for the businesses in the village area, allowing us to place water butts on their premises, in particular the Village Grill, Personal Garage, Littleover Garage, and Kieran Mullin.

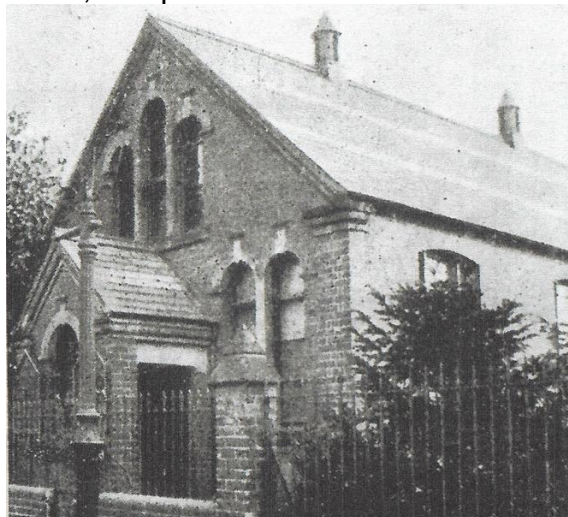
No time to sit on our laurels, we have already begun our winter planting, and it's November, and wreath making time to replace the hanging baskets. Anyone is welcome to assist, please get in touch!

**Next meeting Monday 13 November  
1.30pm rear entrance Littleover Grange  
Hall, Park Lane. Or just get in touch: Jan  
01332 348903 or  
email [jan.dante@virgin.net](mailto:jan.dante@virgin.net)**

## Littleover Village

### Littleover Historical Society

An interesting building has come up for sale in Park Lane, a very small white insignificant looking building, named Littleover Club, and used as a snooker room. This building was Littleover's first Baptist Chapel. A small congregation of Baptists built the chapel in Park Lane in 1821. In the 1880s and 1890s the Chapel was managed by Sacheverell Street Fellowship in Derby. This building was later sold on to Mary Archer, for £90 who used it as an early school room. William North President of Littleover Baptist Church commissioned a new Baptist Church to be built in Thornhill Road, completed in 1889.



Of course, Park Lane has changed significantly over the years - in the early 1880's farm buildings dominated the lane and if you look at the cottages on the opposite side of the road, you can clearly see evidence of past pig entrances on the lower floor.

**Next meeting Friday 10 November 10am at  
Littleover Grange Hall, rear entrance, Park  
Lane. Visitors welcome £3 including  
refreshment. Contact: Jan on 01332 348903 or  
email [jan.dante@virgin.net](mailto:jan.dante@virgin.net)**



## Hannah Fields Community Garden

offers great support for those who are feeling isolated, children who want to get muddy and explore or just for those who want to sit and enjoy a coffee surrounded by nature. Situated on Normanton Lane just down from church they are open Tues and Thur-Sat for you to explore, buy a veg box or and enjoy their vegan café. Find out more at the Hannah Fields Community Garden Facebook Page or see the notice boards on their gates.

# Remembrance Sunday Services

12 November 10.45am outside by the memorial, followed by service in church

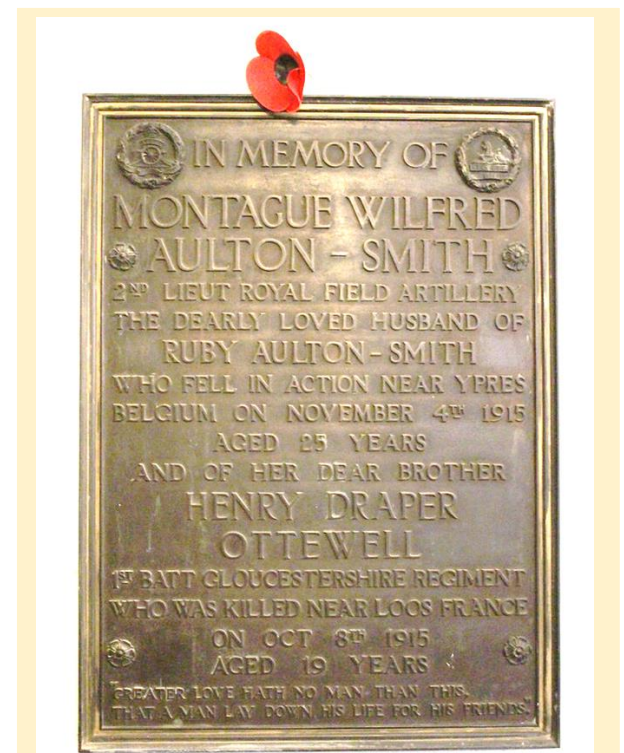
Remembrance Sunday service will begin with a short service by the war memorial starting at 10.45am with a pause at 11am for the customary silence followed by the laying of wreaths.

There will then follow a service in church, led by Rev Rachael Brooks, which will offer more opportunity for reflection and prayer.

The service will include a short history behind one of the memorial plaques in church – near the door to the tower – which remembers Montague Aulton-Smith, aged 25, husband of Ruby, who died near Ypres in 1915. And of her brother Henry Draper Ottewell, aged 19 who died less than a month earlier near Loos.

The widowed Ruby erected this plaque to remember her husband and brother – we can only imagine how devastating it must have been for the whole family. It is these kind of remembrances that bring home the anguish of war, for those in battle and those left behind at home.

As a community – whatever our own personal thoughts about war – we have a duty to continue to remember and honour those who gave so much.



## Bereavement Service 12 November 4pm



Living with the daily reality of bereavement can be lonely and isolating, so each year we offer space to remember those who have died and to acknowledge the grief of those left behind.

The service is simple with hymns, prayers, a short reflection and an opportunity to light a candle to symbolise all those we have loved and lost. The names of those we remember are read out in the darkness, with only the light from the candles to comfort.

All are welcome.





# ReCreate

- Are you creative but never seem to get your materials out?
- Do you consider yourself uncreative, but would like to be?
- Would you like to come to a space where "I can't" could become "I can"?
- Would you like a place where together we can explore our God given creativity in a friendly and encouraging atmosphere?

## Maybe ReCreate could be the place for you?

You can work on your own projects or engage in a suggested activity. Space and resources (and your imagination) will be the only limitations to the range of creative activities we can share in together. Bring your own materials to use and maybe share as you are able. We aim to have a basic range of frequently used materials for those who have none.

**Let's explore our God given creativity**

Fri 3 November

Bring your own project or use  
ReCreate resources and maybe share yours

10am to 11.30am

St Peter's Church Hall

Donations to cover any materials used

For more information contact  
Carole lesncarole15@gmail.com  
Sally thebritlandfamily@sky.com  
Joy joypomroy@yahoo.co.uk



### Bereavement

How other people can help

- Do remember that appearances can be deceptive**  
I may look as if I'm coping okay, but inside I may be falling apart.
- Don't be unprepared for the truth**  
Don't ask me how I am if you only want to hear "I'm okay thank you."
- Do invite me out to coffee or lunch**  
Just to change the scene for a while.
- Don't tell me that you've been too busy to phone or get in touch**  
Better to say "I didn't know what to say."
- Do be ready to listen**  
To all the jumble of emotions I may be feeling without being judgemental.
- Don't try and give me answers**  
It is unlikely that you will have any that will satisfy me – just allow me to express all my fears, questions and doubts.
- Do encourage me**  
To be kind to myself and not to push myself to meet other people's expectations of how I should be.
- Don't measure the way I react**  
Or the emotions I express by your own expectations or experience. My grief is unique to me.
- Do be aware that there will be times when I don't feel able to talk**  
But this doesn't mean I won't want to talk at another time.
- Don't feel you have to do something**  
Just be there.

For more information on bereavement support please visit:  
[www.careforthefamily.org.uk/family-life/bereavement-support](http://www.careforthefamily.org.uk/family-life/bereavement-support)

Care for the Family

Please open your tablets or smart-phones, select the app and scroll to hymn number 21

Thanks to technology, replacing the worn-out hymn books didn't cost a penny



# Hannah Fields – good news for Littleover

Our Creation Care team are keen to support the church in becoming more environmentally aware. It can be tempting to just focus on what's wrong, knowing that our lifestyle in the West is having such a terrible impact on those in poorer countries elsewhere on the globe. Our increasing plastic consumption, fossil fuel dependence rather than transitioning to green energy, fast fashion etc, it can become overwhelming. So, this Harvest we wanted to focus on a good news story. A group we can learn from and be inspired by, right here, in the middle of our parish.

**creation care**  
**re-cycle**  
**re-purpose**  
**re-think**



I wonder, how many of you have heard of Hannah Fields Community Garden? It's tucked away on land between Normanton Lane and Glebe Rise, an oasis in the middle of a huge area of suburban sprawl. Over the last four years the team have been transforming a couple of large fields into a mini forest, seating area and market garden, complete with neatly dug fruit and veg beds and poly-tunnels.

I interviewed Matt, one of the team, for a film segment in our Harvest service on 1<sup>st</sup> October. He waxed lyrical about the project, whose driving aim is to provide a place where people in the local area can become part of the community, reconnect with the natural environment, and improve their wellbeing, as well as buying the produce grown. They are all about the

benefits of eating nutritious, organic food – good for us and the environment - and teaching children and adults how easy it is to grow their own.

In addition, they have a particular commitment to 'reaching those in our community who maybe most at risk from social isolation and working towards a model of empowerment where all can integrate fully into the project and their wider community.' In a country where mental health challenges face more and more people, it's important that communities find ways to support those in need. Hannah Fields are doing fantastic work that supports the third fourth and fifth marks of mission – tending to others, working for justice and treasuring creation, let's pray that God will continue to bless their work.

Please go to their website or FaceBook page to find out more, you'll be inspired!

<https://www.hannahfields.co.uk>

<https://www.facebook.com/hannahfieldscommunitygarden>



**If you have any ideas to share about being more environmentally friendly, please let us know by contacting:**

[rachael@stpeterlittleover.org.uk](mailto:rachael@stpeterlittleover.org.uk)

*[Written by Julia Cross on behalf of the team](#)*

# MISSION UPDATE

## Our Mission Partners

**Contact them, pray for them**

**Juan Carlos & Penny de Marces – in Peru**

Reynaldo Moron 215, Urb. Vista Alegre, Surco  
Lima 33 PERU [psmarcesinlima@gmail.com](mailto:psmarcesinlima@gmail.com)

Juan Carlos is the pastor for Jesús el Nazareno, Cathedral Dean and Vicar General to the Diocese; Penny is now lay leader for JEN and has diocesan responsibility for children's ministry.

**Tim & Kate Lee – (CMS)** [timkatelee@yahoo.com](mailto:timkatelee@yahoo.com)

Jigsaw Kids Ministries, 1<sup>st</sup> Floor Chapel House  
Chapel Lane, St Ives Cambridgeshire PE27 5DX  
Tim and family are back in the UK but continuing to work with Jigsaw in the Philippines.

**Bible Society** [www.biblesociety.org.uk](http://www.biblesociety.org.uk)

Translating, printing and distributing Bibles to people across the world.

**Open Doors** [www.opendoorsuk.org](http://www.opendoorsuk.org)

Supporting over 200 million Christians worldwide who experience extreme persecution for their faith.

**PASH Kenya** [www.pashuk.org.uk](http://www.pashuk.org.uk)

c/o Dave Hargreaves 2 Inglewood Ave,  
Mickleover, Derby DE3 0RT

PASH supports the work of churches, schools, farmers and communities in Kenya.

**Tearfund** [www.tearfund.org](http://www.tearfund.org)

100 Church Rd, Teddington TW11 8QE  
Working in God's name across the world to bring relief to the poorest communities and fight for justice.

**Care for the Family** [www.careforthefamily.org.uk](http://www.careforthefamily.org.uk)

A national charity which aims to promote strong family life and to help those who face family difficulties through marriage, parenting or bereavement.

**Derby City Mission** [www.derbycitymission.org.uk](http://www.derbycitymission.org.uk)

10 Normanton Road Derby DE1 2GW

Phone: 01332 460346

Supporting homeless people and those on the margins of society in the City through the Nightshelter, Jubilee Centre (Debt and Advice Support) and Foodbank; also Street Pastors. Each December we support Christmas Connection at the Gift Service – providing gifts for children who would otherwise receive nothing.

**Borderline Arts** [www.borderlinearts.org](http://www.borderlinearts.org)

119 Osmaston Road, Derby DE1 2GD

A Derby charity supporting people with Borderline Personality Disorder through a range of arts courses, workshops and support.

# TEARFUND UPDATE

Tearfund is a Christian charity with over 50 years of experience in international development. We believe that poverty is not God's plan, and an end to extreme poverty is possible.

We work directly, and/or alongside local partners and churches, in underserved communities in more than 50 countries to tackle complex poverty in three main ways:

## Humanitarian response

We respond quickly to disasters and conflicts, supporting those in greatest need throughout the recovery process.

## Community development

We partner with local churches and organisations, mobilising resources and empowering communities to lift themselves out of poverty.

## Advocacy and influencing

We help individuals and churches speak out on issues of poverty and injustice, and we challenge unjust policies and practices at a local, national and global level.



## Poverty is not God's plan. You are.

Thousands of people needlessly suffer and die every day because of poverty. But that's not God's plan for the world. We believe that we can all play a part in ending extreme poverty and injustice by reaching out to people in need.

For more than 50 years, Tearfund has partnered with local churches and organisations around the world, equipping people to lift themselves out of poverty and fulfil their God-given potential.



## **Our vision**

Our vision is to see people freed from poverty, living transformed lives, and fulfilling their God-given potential.

As we pursue this vision, we have four main focuses:

### **Meeting emergency needs**

We respond quickly to meet immediate needs when crises and disasters hit vulnerable communities.

### **Mobilising churches**

We envision, empower and equip churches to play their part in the development and transformation of their communities.

### **Transforming communities**

We support communities to become resilient to shocks and stresses and work towards a better future for themselves and others.

### **Changing society**

We seek to Influence and change social, political, and economic systems and policies so that the poorest communities can get the services and opportunities they need to thrive.

## **Our values**

As Christians, we follow Jesus' example. We seek to be Christ-centred, compassionate, courageous, truthful and servant-hearted in everything we do.



## **Why does Tearfund work with local churches?**

In communities around the world, churches are supporting some of the most vulnerable people in areas which organisations can struggle to reach. Church leaders are often respected and act as role models within their communities – as such, they are well placed to lead development initiatives.

We believe that poverty exists as a result of broken relationships with God, ourselves, others and creation. The church can play a key role in helping to restore these four broken relationships, bringing whole-life transformation to individuals and communities.



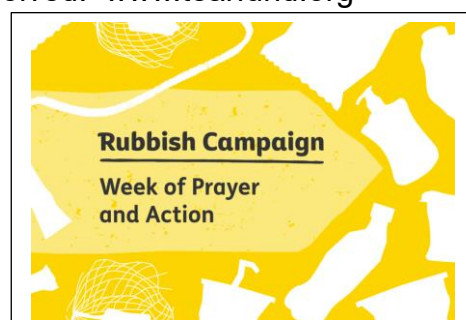
## **Our vision for church and community transformation**

Our vision is to see local churches actively responding to the holistic needs of their communities in practical and sustainable ways, using their God-given potential and resources. This is a life-long journey, and the destination is 'church and community transformation' (CCT). Tearfund's role is to kickstart this journey by helping churches to recognise that they can play an active role in bringing about the change they long to see. In fact, a recent independent study for Tearfund found that an incredible £28 of social value can be created for every £1 invested in the church and the community nearby. They continued to offer food and water for the following days and were also able to offer clothes to those in need.

## **Week of Prayer and Action**

**30 October – 5 November**

Join Christians from around the world to pray for and respond to the world's rubbish problem – with resources to help you get involved. [www.tearfund.org](http://www.tearfund.org)





### *Mobile Footcare Service*

- Toe nail trim/thinning & file
- Corn and hard-skin removal
- Verruca & fungal nail treatment
- Ingrowing toenail treatment
- Cracked heel treatment
- Diabetic footcare
- Mini manicure
- Gel nail.

**Francisca Hannah SAC Dip RFHP**  
**07479 649444**

[francisahannah@hotmail.co.uk](mailto:francisahannah@hotmail.co.uk)

**Registered, fully insured**  
**Foot Health Practitioner**

### **Littleover Women's Institute**

**2<sup>nd</sup> Thursday of the month**

**Littleover Social Club at 7.30pm**

Members new and old welcome.

Come along and see what we do!

**Further information from**  
**Margaret Williams on 767354**



### **Daisychain Benevolent Fund**

**Burton Road, Derby (01332 208225)**

Supporting Teenage Cancer Trust

Children's Ward, Derby

Always require good quality clothing  
and Bric-A-Brac. Please bring  
donations to the shop only during  
opening times.

## **BACK PAIN**

If you are suffering from low back  
pain or neck pain, you should consider  
consulting a registered chiropractor.

Many people are turning to  
chiropractic for the treatment of these  
and other muscle and joint problems.

Treatment is given after a  
thorough case history and a  
full examination.

Chiropractic aims to improve  
the function of your muscles  
and joints.

Treatment is often followed  
by a rehabilitation plan  
which may help to improve  
flexibility and assist in  
preventing a recurrence of  
the problem.

**MJ Whatling, DC, MSc, FCC  
& Associates**

**LITTLEOVER  
CHIROPRACTIC CLINIC**  
(Est. 1988)

**569a Burton Road, Littleover  
DERBY, DE23 6FW**

**Tel: 01332 768408**

[www.littleoverchiropractic.co.uk](http://www.littleoverchiropractic.co.uk)

**CHIROPRACTIC**  
**...so often the answer**

## **Mrs C's Tea Cosy**



**Breakfast \* Toasties \* Sandwiches \* Cakes**

**we also cater for buffets and business lunches**

**also on Facebook \* Still dog friendly**

**Monday to Friday 8am till 2:30pm**

**Saturday 8:30am till 12:30pm**

**4 Normanton Lane Littleover DE23 6GP**

**(next to the church gates) Tel: 07903 761151**



## MayDay Solutions

152 Oaklands Ave.  
Littleover Derby DE23 2QN.  
In business for over 20 years.

### Charlie Elston

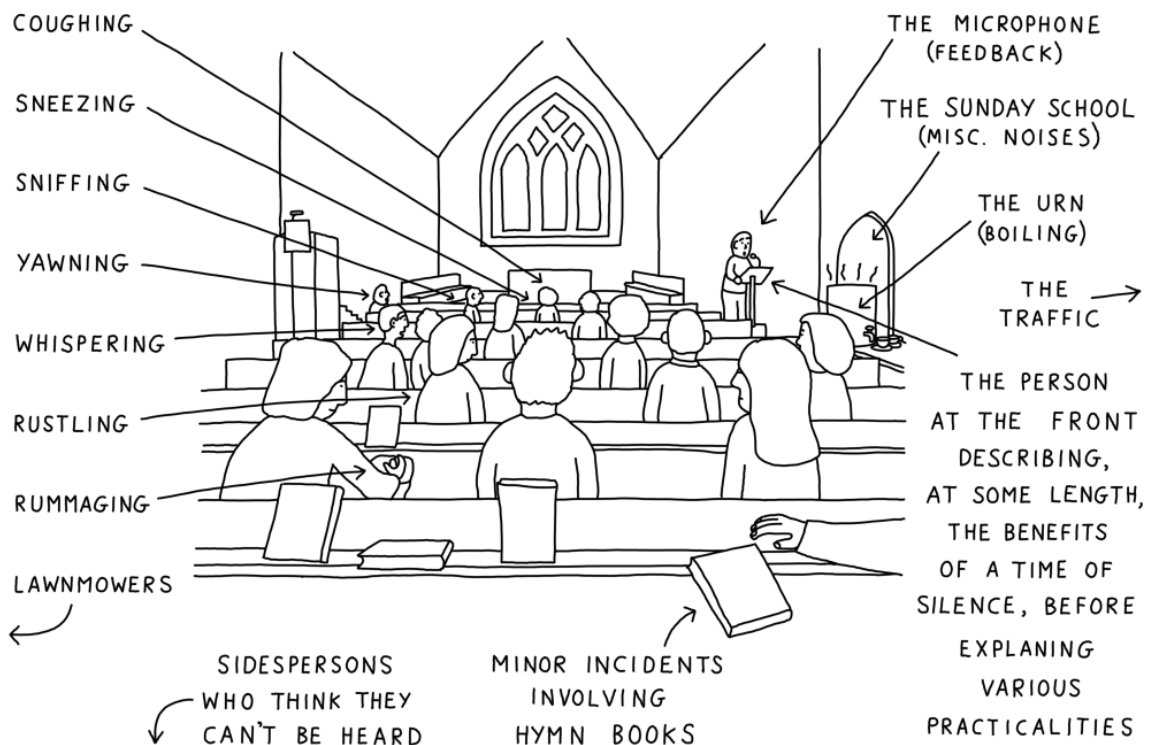
For all your PC needs Internet issues  
repairs, faults ,networking, advice and  
re-instals. Rebuilds and upgrades to  
much faster SSD drives etc. Which loads  
windows in seconds not in minutes.

Phone: 01332-270646  
Mob: 07876243903  
Email: charlie.elston@gmail.com



## A TIME OF SILENCE

PLEASE IGNORE ALL DISTRACTIONS



# FOODBANK



**FEED THE  
HUNGRY**

Please drop any food off at  
The Vicarage and it will be  
taken to the Central Food Hub

**priority is tinned meats**



## Knit and Natter

Every Wednesday 2.15pm  
In St Peter's Hub

for those who can knit like  
grandma and those who've no  
idea – everyone welcome!  
Call Di on 01332 763938

part of the Parish of Littleover & Blagreaves  
**St Andrew's**  
Community Hub

## Giveaway Day

St Andrew's Blagreaves Lane  
Sat 25 Nov 10am – 11.30am



Donate good quality items you don't want  
anymore and take what you need.

Donations can be delivered on  
Fri 24 Nov 4pm-6pm or Sat 9am-9.45am

[www.stpeterlittleover.org.uk](http://www.stpeterlittleover.org.uk)



## How YOU can help with Giveaway Day:

- Help to set up on Friday  
4pm-6pm or donate  
some items ....
- Help on the day  
9am to 12.30pm
- Make tea/coffee,  
welcome people  
9.30am- 11.30am
- Help to clear up  
afterwards on Saturday  
11.30am to 12.30pm.

Contact Charlie Elston if you can offer  
any time on 01332 270646 or  
[charlie.elston@gmail.com](mailto:charlie.elston@gmail.com)



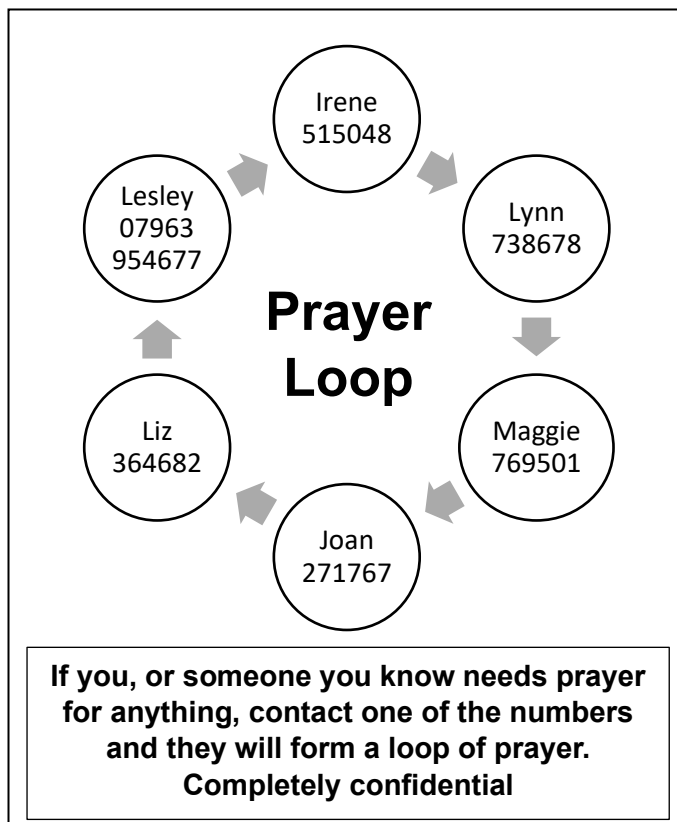
**Answers to October's Trees Quiz:**

1. Giant redwood 2. Weeping willow 3. Oak 4. Maple 5. Ash 6. Copper beech 7. Cedar 8. Elm  
9. Silver birch 10. Sycamore 11. Holly 12. Hawthorn 13. Lime 14. Cherry 15. Amelanchier  
16. Rowan 17. Cypress 18. Apple 19. Hornbeam 20. Hazel 21. Magnolia 22. Pear 23. Scots pine  
24. Larch 25. Plum 26. Mulberry 27. Horse chestnut 28. Spruce 29. Alder 30. Plane  
31. Monkey puzzle 32. Poplar 33. Indian bean tree 34. Yew 35. Camellia 36. Eucalyptus  
37. Ginkgo 38. Almond 39. Laburnum 40. Tulip tree

**Religious Words Quiz (some anagrams)**

Questions	Answers
1. Morning prayer or evening prayer	
2. Singer Charlotte	
3. Like a ----- by Madonna in 1989	
4. Initially place everyone will sit	
5. Found on either side of the head	
6. Crying in the ----- sung by Elvis in 1965	
7. Worship song not for her?	
8. Does Jewish priest like rabbit?	
9. Would his vestments have a stripe?	
10. The ----- of the Peak is in Tideswell	
11. Communion table	
12. Jewish place of worship	
13. Babel or Pisa perhaps	
14. A criminal's admission of guilt maybe	
15. Remove your vest Ryan in here!	
16. Biblical verses about mixed lamps	
17. Burial three feet	
18. How fast can they make you feel better?	
19. Common Uni	
20. Does this architectural feature inspire?	
21. Vital body part for making music?	
22. Chess piece or comedian John	
23. Religion found in Emu slime	
24. Not an odd melody sung	
25. Dawn French was the ----- of Dibley	
26. Map bits	
27. Sinners cite so	
28. Found in kneel on a mat in silence	
29. Cushion on which to kneel erstwhile	
30. Surname of Eastenders actress Letitia	
31. Does wine goblet reach Alice?	
32. Not a service of real fun	
33. Sounds like a search for a religion	
34. Singers sound like a paper quantity	
35. Make of camera	
36. Sing the words and mean them	
37. Ringers in the tower	
38. Holy book found in clockwork orange	
39. Angry crucifix	
40. They are all celebrated on 1 <sup>st</sup> November	

# Prayer Requests



## The Pastoral Team

Looking out for church family – available to listen, care and pray with you.

Talk to Alicia, Rachael, Emma, Jason, Joan or David Ditch

# Members of PCC

Alicia Dring  
Rachael Brooks  
Emma Mallord  
Jason Kennedy  
Jim Britland  
Chris Jones  
Lesley Edwards  
Jeni Baines  
Margit Staehr  
Julie Scott

Helene Roe  
Robin Wood  
Charlie Elston  
John Bird  
Heather Newstead  
Ann Vincent  
Peter Vincent  
Bernie Burton  
(co-opted)

# Home Groups

Home Groups are an opportunity to meet with a small group of people, in someone's home, to look at the Bible, pray, share, learn and grow together. Responsibilities are shared and members support one another as part of growing in discipleship and fellowship. If you'd like to join a group, please speak to Alicia on 767802 or contact a leader directly. Some are currently meeting online.

**Learning Together** Mon 3pm weekly  
**Led by: Robin & Terry Wood**

We enjoy lively and thought-provoking discussions as well as social events and fundraising.

**Pilgrims** Mon 7.30pm fortnightly  
**Led by: Doreen & John Bird**  
Walking together on our journey of faith.

**New Beginnings** Tue 9.45am weekly  
**Led by: Bill & Maggie Browne**  
Our aim is to encourage one another to grow in Christ. As we read the Bible, share, pray, worship and laugh together, we stir each other up in our faith and our Christian walk.

**Queen's Drive** Tues 7.30pm weekly  
**Led by: Liz & Phil Eley**  
A diverse group interested in supporting people in mission.

**Sticking Point** Wed 6.45pm fortnightly  
**Led by: John Bradley**  
A group of mature Christians who support each other spiritually, with hospitality being a particular strength.

**Route 66** Tues 7.30pm weekly  
**Led by: Jon & Jenny Russell**  
Named after 66 books in the Bible and taking the journey with Jesus together.

**StAND** Wed 1pm fortnightly  
**Led by: Jenny Cooper**  
A group primarily of people who used to worship at St Andrew's and now part of St Peter's – always learning and growing together, praying for Blagreaves

**Platform** Wed 7.15pm weekly  
**Led by: Lesley Edwards**  
We support each other in our walk with God, with an emphasis on practical application of Scripture.

**ReLENTless** Wed 7.30pm fortnightly  
**Led by: Helen Homes & Deidre Cheetham**  
Following a one off Lent group (hence name) this group is loving, plain speaking and full of laughter. Everyone is encouraged to fully participate.



# Parish Activities

## SUNDAY

10am Service in church or on Zoom

## MONDAY

**THE CROSSED KEYS CAFÉ** – 9.30am to 12.30pm  
**TIDDLYWINKS Stay and Play** 1.30pm- 2.45pm

## TUESDAY

**LUNCH CLUB** – 12 noon – 2pm

Church Hall, Normanton Lane. Guests welcome, help needed.

## WEDNESDAY

**10.30am MIDWEEK HOLY COMMUNION**

**KNIT & NATTER** 2.15pm-4.15pm – in Church Hall

Bring along your knitting, crochet or embroidery and chat with others as you create your latest masterpiece. Or if you're a beginner, learn from other members.

**HOME GROUPS** see opposite – some are meeting online.

## THURSDAY

## FRIDAY

**10am RE-CREATE** – first and third weeks of the month  
a safe space to explore faith and creativity - all welcome.

## **CHURCH FLOWERS**

Contributions towards the Church flowers at weekends or offers to arrange flowers are always welcome.

Contact the church office on 767802.

## NO VOLUNTEERS NEEDED

We don't need volunteers in the Parish of Littleover & Blagreaves, rather we have a hope that all enrolled members of our church family will serve the wider work of the churches and community and not just turn up on a Sunday. Especially with the new Mission Plan. How are you serving the work of our parish? Could you chat with someone who is isolated at home? Help with our children's work or help keep the churchyard looking spruce? Make refreshments? Can you pray to see God at work in our parishes? We're not asking for hours of your time – if we all do a little then the tasks are shared and we can see lives change through the power of the Holy Spirit. Talk to Alicia or Rachael about what might be possible.

# Special Occasions

## **Baptism or Thanksgiving**

Please see our special booklet on the website or contact the church office 767802 for a copy. We want to get to know you before booking a date, so we look forward to meeting you in church.

## **Marriage & Banns**

Congratulations! The rules are now different and you don't have to live in the parish any more but can be married at St Peter's if you have a qualifying connection. For more information, contact the office, look at the church website OR checkout [www.yourchurchwedding.org](http://www.yourchurchwedding.org)  
We are happy to talk to you about dates, including midweek weddings.

## **Funerals**

Arrangements are normally made through your undertaker and we can officiate at services in church, at the Crematorium and local municipal cemeteries.

## **Churchyard**

There are no longer any new grave spaces, but we can bury ashes in our Garden of Remembrance. No memorials are allowed on the site but an entry will be made in the Book of Remembrance in the church. Please inform the undertaker as early as possible of your wishes. Plots cannot be booked in advance. Please be aware that maintenance of the churchyard is done by volunteers and contractors which are paid for by the church family. If you can care for your own area, that helps a great deal.

## UNIFORMED GROUPS

### **BEAVERS** - for children

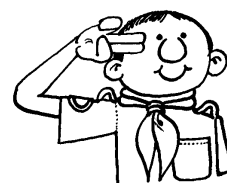
aged 6-8

Tuesday 5.45-6.45pm,

Scout HQ

on Brayfield Road Contact:

Becky 07912 658909



### **CUBS** - for children aged 8-10

Tuesday 7.00-8.30pm, Scout HQ

on Brayfield Road

Contact: Kathryn Hallam on 07977 250576

### **174<sup>th</sup> (142<sup>nd</sup>/113<sup>th</sup> Littleover Churches)**

#### **SCOUTS** - for children aged 10-14

Friday 7.30-9.30pm, Scout HQ on Brayfield Road

Contact: Tom 07525 759602

### **3<sup>rd</sup> LITTLEOVER BROWNIES** – children aged 8-10

Friday 5.45-7.15pm, Scout HQ on Brayfield Road

Contact: Heather Collins 01773 820119

# Notice Board – November 2023

1	Wednesday	10.30am	Holy Communion	Church
		2.15pm	Knit & Natter	St Peter's Hub
2	Thursday	12noon	Les Wormsley Funeral	Church
		7.30pm	Worship Group	Church
3	Friday	10.00am	ReCreate	St Peter's Hub
4	Saturday	10am	Friends of Littleover Parks Action Morning	Sunnydale Park
		10am	Open Day at All Saints' Findern	All Saints' Findern
		5.00pm	Confirmation Class	48 Jackson Avenue
5	Sunday	Fourth Sunday before Advent		
		10.00am	All Age Worship	Church & Zoom
		6.30pm	Evening Service	Church
6	Monday	9.30am	Crossed Keys café	St Peter's Hub
		1.00pm	Clergy Staff Meeting & Prayers	Church
		1.30pm	Tiddlywinks Stay & Play	St Peter's Hub
		2.30pm	Sharon Doig funeral	Markeaton Main
7	Tuesday	11.30am	Lunch Club & Service	St Peter's Hub
		7.30pm	Standing Committee	Church meeting room
8	Wednesday	10.30am	Holy Communion	Church
		1.00pm	St Andrews Homegroup	St Andrew's Hub
		2.15pm	Knit & Natter	Church Hall
9	Thursday	7.30pm	Worship Group	Church
		7.30pm	Thirsty Thursday	White Swan
10	Friday			
11	Saturday	5.00pm	Confirmation Class	48 Jackson Avenue
12	Sunday	Remembrance Sunday		
		10.45am	Remembrance Service	Church & Zoom
		4.00pm	Bereavement Service	Church
		5.00pm	Messy Youth meeting	St Peter's Hub
13	Monday	9.30am	Crossed Keys café	St Peter's Hub
		1.30pm	Tiddlywinks Stay & Play	St Peter's Hub
14	Tuesday	12.00pm	Lunch Club	St Peter's Hub
15	Wednesday	10.30am	Holy Communion	Church
		2.15pm	Knit & Natter	St Peter's Hub
16	Thursday	7.30pm	Worship Group	Church
17	Friday			
18	Saturday	10.15am	ReCreate Day (Pre-Booked only)	Church
19	Sunday	Second Sunday before Advent		
		10.00am	Morning Worship	Church & Zoom
		6.00pm	Parish Prayers	Zoom
20	Monday	9.30am	Crossed Keys café	St Peter's Hub
		1.30pm	Tiddlywinks Stay & Play	St Peter's Hub
21	Tuesday	12.00pm	Lunch Club	St Peter's Hub
22	Wednesday	10.30am	Holy Communion	Church
		1.00pm	St Andrews Homegroup	St Andrew's Hub
		2.15pm	Knit & Natter	St Peter's Hub
23	Thursday	12.00pm	Phil Rollinson's Funeral	Church
		7.00pm	Mission Steering Group meeting	St Andrew's Hub
		7.30pm	Worship Group	Church
24	Friday			
25	Saturday	10.00am	Give Away Day	St Andrew's Hub
26	Sunday	Sunday before Advent		
		10.00am	Holy Communion	Church & Zoom
27	Monday	9.30am	Crossed Keys café	St Peter's Hub
		1.30pm	Tiddlywinks Stay & Play	St Peter's Hub
28	Tuesday	12.00pm	Lunch Club	St Peter's Hub
		7.30pm	PCC meeting	St Peter's Hub
29	Wednesday	10.30am	Holy Communion	Church
		2.15pm	Knit & Natter	St Peter's Hub
30	Thursday	7.30pm	Worship Group	Church