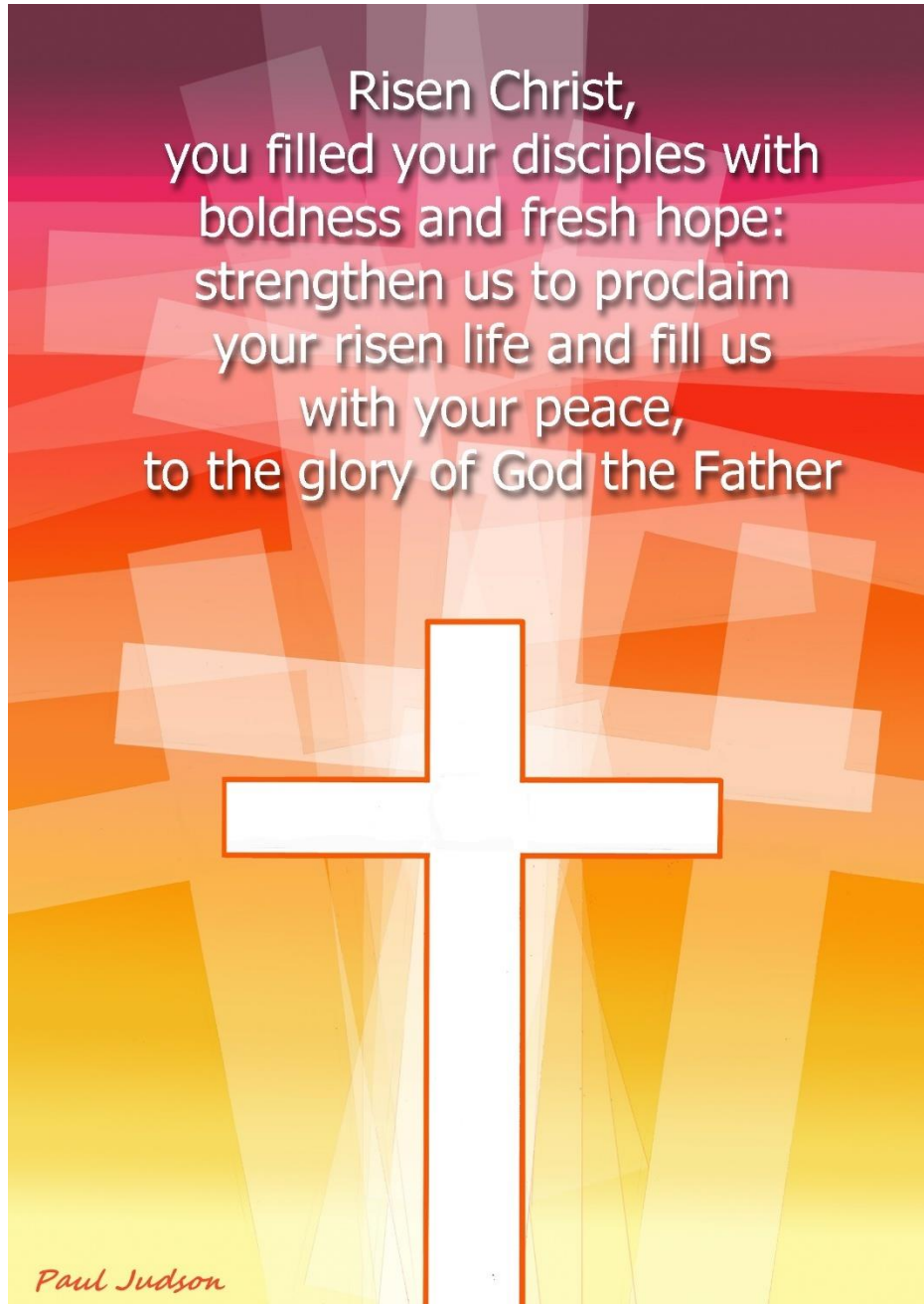


Keyhole

April 2025

50p



www.stpeterlittleover.org.uk

Phone: 01332 767802

How to contact us



01332 767802



35 Church Street
Littleover Derby
DE23 6GF



office@stpeterlittleover.org.uk



In Person at The Parish Office

Office open Mon, Tue, Thu & Fri 9.30am-2.30pm

Church Administrator: Iona Hague

Office@stpeterlittleover.org.uk

Who's Who

Vicar

Revd Alicia Dring 767802
alicia@stpeterlittleover.org.uk

Curate

Revd Emma Mallord
Phone 07752 645496
emma@stpeterlittleover.org.uk

Associate Priest

Revd Jason Kennedy
07572 987083
jason@stpeterlittleover.org.uk

Retired Clergy

Revd Jenny Cooper 761783
jalcooper@btinternet.com

Revd David Ditch 271767

Readers

Paul Taylor 609337
Carole Dickinson 766855

Church Wardens

Helene Roe 760682
hroederbyshire@gmail.com
Chris Jones 776634
chris-jones-derby@outlook.com

PCC Secretary

Mrs Julie Scott
pcc@stpeterlittleover.org.uk

Finance Manager

Mr Paul Cheetham
office@stpeterlittleover.org.uk

Safeguarding

Margit Staehr
safeguarding@stpeterlittleover.org.uk

Hub Bookings

Mary Edwards
bookings@stpeterlittleover.org.uk

St Peter's Junior School

Headteacher
Mr Frazer Smith 767158
frazer.smith@stpeters.derby.sch.uk

Keyhole Magazine

Editorial Team

office@stpeterlittleover.org.uk

The articles and viewpoints expressed in this magazine are not necessarily those of the Vicar or the PCC.

Deadline for next edition – by email before the **10th** of the previous month.

A colour version of Keyhole can be found on the Church website:

www.stpeterlittleover.org.uk

From the Vicarage

More than halfway through Lent with Holy Week and Easter approaching. And Easter is late this year with the schools unusually on holiday BEFORE the festival, returning straight after Easter Monday. Can't imagine how it will be with hoards of chocolate fuelled children racing back into the school gates on a massive sugar high.

But why the chocolate? Why the celebration? For a number of reasons, not least that getting excited about Jesus returning from the dead and the implications for humanity. But more of that later.

Right from the early church Lent was a time to reflect, to live soberly, frugally and to identify with Christ and his forty days and nights in the desert before the start of his ministry. This timing is deliberate.

After 40 days of flood Noah sent the raven and then the dove to find some dry land.

Following their escape from slavery, the people of Israel wandered in the wilderness for 40 years. And the book of Exodus is the only book in the Bible to have 40 chapters.

The first three kings of Israel – Saul, David and Solomon – each reigned for 40 years.

Elijah went without food or water on Mount Horeb for 40 days.

And this was reflected by Jesus with his own forty days and nights in the desert without food or water and under relentless temptation from the devil.

Our engagement in Lent for forty days and nights is to help us not only identify with Jesus but to rely more on God for the resources we need. As God the Father supported Jesus as he struggled with his human nature to do without food and water and to resist the devil, so through prayer we are able to manage our own deprivations and temptations.

More recently people DO things rather than DENY – our Curate Emma has committed to read the whole Bible during Lent and is following a reading plan which requires real discipline. The purpose is to spend time with God or to do something positive to bless our community.

Whatever your Lenten observance I hope you've been able to find time and space to be with God and that you will join us for all the celebrations on Easter Day

With blessings,

Alicia

From the March 2025 Registers

Burial of Ashes 23 Mar

Janet Orme

Tiddlywinks



stay
and
play

1.30pm – 2.45pm

Mondays in term time

St Peter's Hub

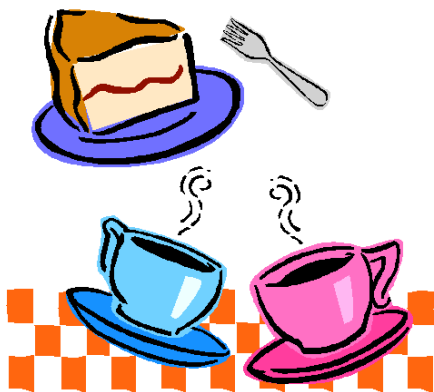
Toys, songs, games, crafts and refreshments

The Crossed Keys Café

St Peter's Hub

Mondays

9.30am – 12.30pm



Everyone welcome

Alicia's Recovery

On 20 December our vicar Reverend Alicia Dring experienced a stroke in the centre of her brain which has impacted her left side.

She has not lost any strength or movement but there continues to be reduced sensation in some of her fingers and around her mouth (like a dental anaesthetic wearing off).

She doesn't look any different (!), but when she is tired sometimes has to use a walking stick to stop her getting too wobbly. She is currently also accepting help when distributing Holy Communion.

Alicia is now back at work on a very limited timetable, trying not to work more than 3-4 hours a day and is supported by the church team to ensure she doesn't do too much. Physically she is much stronger – regular trips to the gym – but lots of talking and 'engagement' can be tiring, so she is very grateful for your patience as her recovery continues.

Alicia said: "I am hugely grateful to the church family and wider community for their prayers, love and care for myself and Steve as my recovery continues. While I may never fully recover some physical sensation, I know that I have been remarkably fortunate to not have been more seriously affected.

Thank you for all your prayers, cards, flowers, food and support. We are both very thankful to be part of St Peter's church family and the wider Littleover community."

Holy Week and Easter

Services in Holy Week

In recent years we have established a pattern of evening services across the churches in Littleover and Blagreaves. Worshipping together in a short service at 7pm for about 30 minutes, we remember the events of Christ's final days as he approached the cross. We encourage you to attend one, if not all of the services to experience for yourself once again the joy and trauma of those days in Jerusalem

Monday 14 April 7pm

Littleover Baptist Church

Tuesday 15 April 7pm

Newmount Methodist Church

Wednesday 16 April 7pm

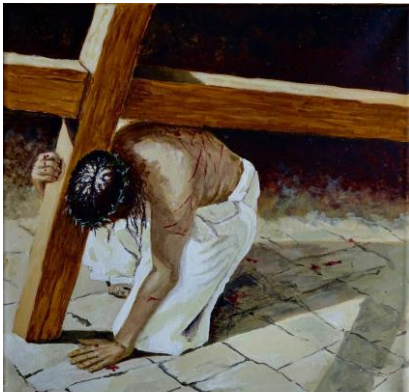
Littleover Methodist Church

Thursday 17 April 7pm

The Haven Christian Centre

Good Friday 10am All Age Worship & Walk of Witness in the village

Hosting our brothers and sisters from other churches we have an All Age Service to remember the events of Good Friday and then we carry a large wooden cross through the village – stopping to sing and pray at various points, and ending by placing the cross in the flowerbed by North Parade. This remains in the centre of our community for the next two weeks as a witness to Christ. Intrepid cross carriers and walkers are finally rewarded with tea, coffee and hot cross buns at Littleover Baptist Church.



Good Friday 2pm Hour at the Cross

This is traditionally a time for Christians to watch and wait with Jesus, remembering his last hour on the cross. It is by nature, contemplative, agonising and necessary.

We cannot experience the true joy of Easter Day without fully immersing ourselves in the pain and horror of the cross. To acknowledge our own part in Christ's death – it is our sin that is redeemed through his innocent sacrifice. Please make this a priority to attend.

Easter Day Celebrations

Easter Day is the climax of the Christian year – celebrating the resurrection of Christ, where sin and death are defeated. We are Easter People – living out the truth of the resurrection.

There is a spoken service of Holy Communion at 8am and then an All Age Holy Communion – with plenty of resounding Alleluias! – at 10am, plus chocolate, flowers aplenty, lively worship and the opportunity to share together in Holy Communion. Everyone welcome!



Thirsty Thursday



at The White Swan Littleover

10 April 7.30pm

catch up with the fellas

Call Steve for more info

07790 431090

CHURCHYARD CLEAN UP



Sat 19 Apr 9.30am – 12noon
Everyone Welcome

ACCESS IN CHURCH

There are wheelchairs available in Church and there are two BackFriends (support frames for those with sore backs) which fold out onto the pews. For those with hearing difficulties, we have a Loop Transmission System, covering the whole church. Hearing aids adjusted to stop 'T' will pick up the service directly. Ask the welcome team for more details.



Jonathon Hemingray Sculpture

Handmade wooden sculptures – tactile, expressive and fluid – demonstrating the grace and love of God

Suitable for ordination, baptism, wedding, birthday, anniversary or in memoriam

Based in Derby so local collection is easy
Other designs are also available please take a look at my website or call for a specific commission.

www.jonathonhemingray.co.uk

jonathonhemingray@hotmail.com

Creation Care

Exciting News for our Parish

GIVE TO GO GREEN

We are delighted to announce that St Peter's has been awarded matched funding through the Church of England's Give to Go Green scheme. This initiative supports churches undertaking small to medium-sized carbon reduction projects by matching donations pound-for-pound.

For every £1 generously donated by our community, St Peter's Church will receive an additional £1 from the scheme. To help us reach our goal of raising £10,000, we'll be hosting a variety of fundraising events between 18 May - 29 June. Donations must be made digitally – either online or through our contactless card reader in church. This ensures that matched funds are transferred directly to us at the end of the fundraising period without any additional submissions. While Gift Aid won't be matched, we can still claim it on qualifying donations.

We've applied for the maximum match funding of £10,000 to replace the windows at St Andrew's Hub.

This vital community space hosts groups such as Little Angels Pre-school and Young People's after-school Hot Chocolate and Toast, along with many others



Help us raise £10,000 between 18 May - 29 June 2025

Unfortunately, the current St Andrew's Hub wooden-framed, single-glazed windows and doors are poorly fitting, allowing drafts and making it difficult to maintain warmth. With the building heated by electricity, the cost to heat it – both financially and environmentally – is significant.

By upgrading the windows and doors, we aim to improve the Hub's energy efficiency, making it warmer for its users and significantly reducing our carbon footprint. Every action, no matter how small, helps mitigate climate change.

Did you know that you have a carbon footprint too? Why not calculate yours using the free WWF Carbon Footprint Tool at footprint.wwf.org.uk? It only takes 10-15 minutes!

Look out for updates about our fundraising events on our Church Family Facebook page, as well as in Interlink and Keyhole.

This is a fantastic opportunity to make a positive impact on global warming while blessing the many people in our parish who rely on St Andrew's Hub.

If you're interested in helping our Creation Care group or would like more information, talk to Peter, Sharon, Julia or Ali. Or email creationcare@stpeterlittleover.org.uk

Bible Bite

A short story from the Bible

It can be read in the Bible in
Lk 22:1-13, Mt 26:14-19, Mk 14:10-16

It was just before Passover, when Jews celebrate God rescuing them from Egypt. Jesus and his disciples were in Jerusalem..

The Chief Priests were plotting



How can we get rid of Jesus?
He always has crowds around him.

Jesus' disciple Judas came to them...



I could help you.

We'd be happy to pay you

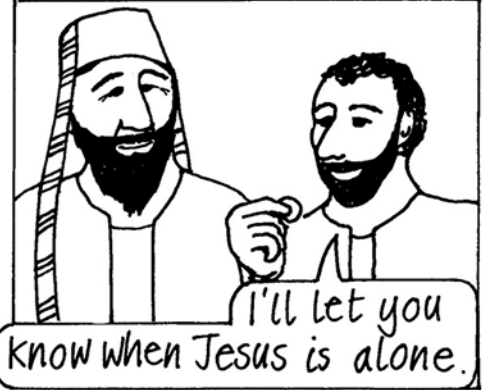


How much?

30 silver coins



30 silver coins happened to be the same amount that had to be paid as compensation to the owner if a slave was killed. Ex.31:32

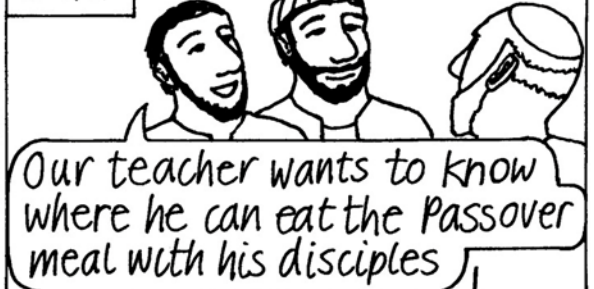


I'll let you know when Jesus is alone.

Meanwhile, Peter and John asked Jesus...



They did, and asked the house owner



The room is upstairs on the roof, ready to use



Peter and John got the meal ready



That evening, Jesus and his 12 disciples went to the room to eat the Passover meal.



Space to be with God

Are you looking to connect with God in a deeper way? Would you like to have a set time to spend praying to Him and worshipping Him? In that case God Space is just the place for you!

We have two God Space sessions each month. On the first Sunday at 6pm in St Peter's Church we meet in person for an extended time of worship, bible reflection and prayer. This is an opportunity to allow our worship and praise to flow without the more formal liturgy structure we have at our morning services. We allow plenty of space to connect with God through different styles and methods of prayer including times of silence.



On the third Sunday at 6pm we meet on Zoom to worship and pray together. This session has a focus on bringing our world, and in particular our Parish, before God in prayer, asking for his help in all the issues and situations we are facing. We come in faith believing we need to knock on the door of heaven, and that when we ask, we will receive. (Matthew 7:7-11).

You don't need to be the greatest expert in prayer to come along. God longs to meet with anyone who comes to Him with an open heart. We look forward to seeing you at one of these sessions soon; you will be very welcome!

New Bookings Manager for Hubs



We are delighted to announce the appointment of Mary Edwards to the role of Hubs Manager: One-Off Bookings and she will do, just as her title suggests, manage the occasional hires of the St Peter's and St Andrew's Hubs. We had to suspend single hires last year when the management of so many queries, plus invoicing and follow up was taking up a disproportionate amount of Iona's time. But as we clearly renamed them 'Community Hubs' it was vital that we found a way to make them available to the wider community. You can contact Mary on bookings@stpeterlittleover.org.uk or call 07940 717963. And we are thrilled to be baptising Isabel and Thomas in the All Age Service on 6 April.

Derby Bible Week 28 April – 1 May



Book the 2025 Derby Bible Week in your diaries now! Mark Ellis will be speaking on the theme of 'Jesus' Heart for Unlikely People', from Mark's Gospel.

This will be hosted at Woodlands Church from Monday 28 April – Thursday 1 May, 7.30pm – 9pm with refreshments served afterwards. Affiliated to Keswick Ministries, and a book stall will be available.



Please visit

www.derbybibleweek.org.uk/2025 for more information or use the QR code.

Mothering Sunday – 30 March 10am

St Peter's has the longstanding tradition of the gentlemen of the church preparing the flowers which are shared on Mothering Sunday (picture left from 2024). And this year will hopefully be no different.

Our service will also include the opportunity to make a paper daffodil to give to Mum or someone who cares for you.

And the final song of the service will be an opportunity to place a paper flower or heart on the communion table in memory of a mother, grandmother, Godmother or child that has died and that you wish to remember. We know that Mothering Sunday is not always easy for some and we hope to offer space for grief as well as celebration.



The Bible Course

What is the Bible really all about?

The Bible is the top-selling book of all time, which sounds great. But how do we read and understand such a huge and varied book? How can we grasp all that it has to say to us? What do all those long, and if we're honest, sometimes boring bits, have to do with who God is and how he relates to us today?



Is it really necessary for us to know our Bibles? Well, this summer we are hoping to answer these and perhaps many more of your questions about the Bible, along with pointing you

in the right direction to discover more of the answers for yourselves. After Easter in our sermon series and Home Groups we are going to be following 'The Bible Course' teaching from the Bible Society. This course will help us to understand the wide and overarching picture of the Bible from Genesis to Revelation. We will be looking at how all the different sections and writing styles fit together to help us to understand the bigger picture of God's love for His people.

The course is based around a series of eight videos, plus lots of extra online content to help you learn more. There will also be daily readings for those who want to take a deeper dive into the Bible. Some of you may recall we ran this as an online course during the early days of Covid, but following the success of The Prayer Course in Lent, we thought it was worth a revisit.

If you would like to know more about this then please speak to Rev Emma.



Take a look at the course
for yourself – scan me!

Littleover in Bloom

Apart from tidying up the tubs during the cold spells in February when the temperature was really bitter we were a very lazy group regarding gardening, however, our brains were still very active! This year our theme will be something very connected to Derby in particular, as the railway celebrates 200 years of passenger train travel.



No, we don't intend to haul an old railway carriage up Burton Road, but we have some good ideas! We also hope to include the schools by creating station signs? In the meantime, as we all continue to admire the changes in the seasons as the bulbs begin to die down and the green shoots of plant life appear encouraged by the April showers. Please don't forget the closing date for the Front garden competition is the end of this month, and the judging is the first two weeks of July!

Our next meeting will be Monday 7 April 1.30pm. Anyone is welcome to join us. Littleover Grange Hall, rear entrance, Park Lane. Contact Jan on 01332 348903 or jan.dante@virgin.net

Littleover Village

Littleover Historical Society

As the Railway mark 200 years of passenger train travel this year 2025, we can look back at such a huge breakthrough in travel beginning with George Stevenson's Locomotion carrying more 400 people along Stockton and Darlington Railway on 27 September 1825.

It must have seemed a long way for people in Littleover then, with today's transport, not so much now. 50 years later as rail travel drew nearer to Littleover, in 1875 our next door neighbour Mickleover, celebrated the opening of a railway station, which covered the Mickleover to Radbourne route.



Although we never sported a railway ourselves we certainly housed many Railway managers. Littleover House was originally thought to have been purchased or maybe leased by the Midland Railway Company, but was known to have been owned later, by Sir James Allport, renowned as a pioneer of comfortable railway travelling.

Next meeting Friday 11 April 10am. Rear entrance Littleover Grange Hall, Park Lane, DE23 6FX Visitors welcome. Join us for a chat and refreshments £3. Contact Jan on 01332 348903 or jan.dante@virgin.net



Hannah Fields Community Garden

offers great support for those who are feeling isolated, children who want to get muddy and explore or just for those who want to sit and enjoy a coffee surrounded by nature. Situated on Normanton Lane just down from the church they are open Tues and Thu-Sat for you to explore, buy a veg box or and enjoy their vegan café. Find out more at the Hannah Fields Community Garden Facebook Page or see the notice boards on their gates.

Annual Church Meeting and Reports

We are approaching that time of year again when we review the previous year, both in terms of activities undertaken and monies received and spent. As a registered charity we are required by law to produce a report and hold a meeting to elect the officers of the church.

This includes electing our Churchwardens – which takes place before the main meeting at a ‘Vestry Meeting’ which is open to anyone who is either on the church electoral roll OR resident in the parish. We are hoping that our current wardens Chris Jones and Helene Roe will continue to serve us for the coming year.

We then elect people to serve on the PCC and on Deanery Synod – roles that require attendance at meetings, engaging with the business of the church and parish in both practical and prayerful ways. There are a number of spaces available this year, so please prayerfully consider if God is calling you to serve in this way.

In order to serve on the PCC and indeed vote at the meeting you need to be on the Church Electoral Roll – in essence the membership roll of the church. And we are required to fully overhaul the roll every five years – and 2025 is the year! Many of you will already have been contacted by our Electoral Roll Officer, Jane Hughes to complete the paperwork afresh. If you still need to do this the deadline is 6 April.

We hope to have the annual report and accounts available for distribution by Easter Sunday and the Annual Parochial Church Meeting (APCM) is on Wednesday 30 April 7.30pm in church.

Anyone fancy a cuppa?

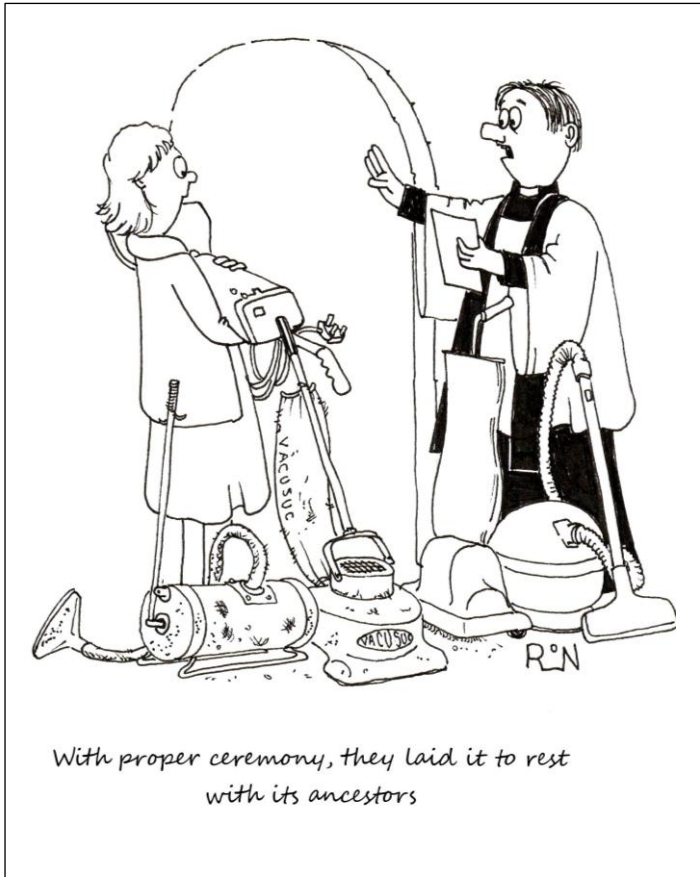
The St Andrew’s Café started after the October half-term last year and has been running every Friday from 11am, in the Green Room at the St Andrew’s Hub. The café is a space for us to meet with the parents and carers of those attending the Little Angels Preschool which is run from there.

It has been a great way for us to get to know the Little Angels staff as well as the parents and carers.



The café is a simple set-up providing tea and coffee along with a selection of biscuits and home-made cakes. The cakes are particularly popular with the kids. The Little Angels team provide some toys to entertain the kids and generally we have a lot of fun, along with making quite a few crumbs!

The cafe is served by a small team of volunteers, headed up by Paul Taylor, but we could do with a few more to help this run more smoothly. If you enjoy a chat over a cuppa and don’t mind washing up a few cups, then please speak to Paul or Rev Emma about getting involved. Did I mention, there will also be cake!



ReCreate

Are you creative but never seem to get your materials out?
Would you consider yourself uncreative, but would like to be?
Would you like to come to a space where "I can't" could become "I can"?
Would you like a place where together we can explore our God given creativity in a friendly and encouraging atmosphere?

Maybe ReCreate could be
the place for you?

You can work on your own projects or engage in a suggested activity. Space and resources (and your imagination) will be the only limitations to the range of creative activities we can share in together. Bring your own materials to use and share if you can. We have a basic range of frequently used materials for those who have none.

Let's explore our God given creativity

Fri 4 April: exploring card making

Fri 18 April: No ReCreate

Fri 2 May: Exploring 'waiting'

Bring your own project or use ReCreate resources and maybe share yours.
Donations welcome to cover materials.
Bring your own drink.

9.50am to 11.30am
St Peter's Hub Large Hall

For more information contact:

Carole

lesncarole15@gmail.com

Joy

joypomroy@yahoo.co.uk

Illuminate your Faith

Have you ever thought about learning more about your faith? Did you know that the Diocese of Derby offer some discipleship courses to enable you to expand your knowledge, grow in discipleship and develop the gifts God has given you in the service of the church?

This training has been designed to enable anyone in the Diocese to undertake study that will help to develop both personal faith and service of God and his Kingdom through development of gifts and skills. And it is open to all who want to learn more about their faith and also to those who want to develop in ministry.

The training has also been designed to be as flexible as possible so you can just study one subject that particularly interests you, doing assessments or not as you wish. You can then go on to do more subjects if you feel you'd like to. You don't need any formal qualifications to take any of the modules, just some good thinking and reflecting skills.

You can work towards a Certificate of Mission & Ministry by completing the whole course with assignments or you can simply do the modules for your own faith journey. Completing one module or many, and you can start, stop for a while and then pick up again later.

Find out more from the training website www.discipleship-training.org



Interactive Easter Trail for Families

Our Children and Youth People's team are hoping to set up an interactive Easter Trail around the outside of the churchbuilding and wider churchyard to help families engage with the Easter story.

There are six posters to see – offering different aspects of the story – which you can view by using the QR code on each poster. Each code will reveal a different part of the story and when you've finished the trail, you can register the completion on the church website by answering a simple question.

You'll then be sent a voucher code so that you can come along to church on Easter Day and collect a free Easter egg. (details still to be finalised). A great family activity for the Easter holidays.



Mission Update

Our Mission Partners

Contact them, pray for them

Juan Carlos & Penny de Marces – in Peru
Reynaldo Moron 215, Urb. Vista Alegre, Surco Lima
33 PERU psmarcesinlima@gmail.com

Juan Carlos is the pastor for Jesús el Nazareno, Cathedral Dean and Vicar General to the Diocese; Penny is now lay leader for JEN and has diocesan responsibility for children's ministry.

Tim & Kate Lee – (CMS) timkatelee@yahoo.com
Jigsaw Kids Ministries UK, Stonecheck,
Main Street, Milnthorpe, Cumbria, LA7 7QZ
Tim and family are back in the UK but continuing to work with Jigsaw in the Philippines.

Bible Society www.biblesociety.org.uk
Translating, printing and distributing Bibles to people across the world.

Open Doors www.opendoorsuk.org
Supporting over 200 million Christians worldwide who experience extreme persecution for their faith.

PASH Kenya www.pashuk.org.uk
c/o Dave Hargreaves 2 Inglewood Ave, Mickleover, Derby DE3 0RT
PASH supports the work of churches, schools, farmers and communities in Kenya.

Tearfund www.tearfund.org
100 Church Rd, Teddington TW11 8QE
Working in God's name across the world to bring relief to the poorest communities and fight for justice.

Care for the Family www.careforthefamily.org.uk
A national charity which aims to promote strong family life and to help those who face family difficulties through marriage, parenting or bereavement.

Derby City Mission www.derbycitymission.org.uk
10 Normanton Road Derby DE1 2GW
Phone: 01332 460346

Supporting homeless people and those on the margins of society in the City through the Nightshelter, Jubilee Centre (Debt and Advice Support) and Foodbank; also Street Pastors. Each December we support Christmas Connection at the Gift Service – providing gifts for children who would otherwise receive nothing.

Borderline Arts www.borderlinearts.org
119 Osmaston Road, Derby DE1 2GD
A Derby charity supporting people with Borderline Personality Disorder through a range of arts courses, workshops and support.

Care for the Family

Care for the Family believe that every family should have somewhere to turn for support in both the good times and when family life is challenging. Their **comprehensive website said:**

“We offer advice and support to help you in your family circumstances, whether it's the excitement of getting married, the thrill and anxiety of having a new baby, or the joy, and sometimes difficulty, of raising teenagers. Also that family life does not always work out the way we had hoped or anticipated, and therefore we want to support couples with relationship difficulties, mums and dads with additional parenting challenges, and those who are living with loss.

Helping parents survive and thrive

Raising children can be a physical and emotional rollercoaster! And that's why mums and dads need all the support they can get – not only to help them through the joys and challenges of being a parent, but also to keep their own relationship strong. Here's a selection of support to help you to build a healthy family:

- Parenting blog
- Additional needs
- Single parenting
- How to help my teen
- Parenting podcasts
- Step families
- Courses for parents
- Top tips leaflets.



Couples Support - relationship support for every season

Every relationship is different, but they all experience ups and downs – there are the romantic times when the sun seems to be always shining, and the tough times when winter seems to have set in for good.

We want to meet you where you're at in your relationship, whether you're taking your very first steps or have been married for years, in the good times and in the bad.



As well a wide variety of resources and courses we have articles offering support and advice on miscarriage, retirement, illness and domestic abuse.

Bereavement Support - help for those who are hurting

Coping with the pain and heartache of a close bereavement is always difficult – not least when it's accompanied by a sense of loneliness and a feeling that no one understands. We want to help those who are living with loss to discover hope for the future, and the strength to rebuild their lives and the lives of their families.



We offer support in the following areas:

- Widowed young support
- Bereaved parent support
- Bereaved sibling support
- Loss of partner
- Supporting bereaved people
- The Grief Journey
- Bereavement Care awareness training
- Help with the cost of living.

How can we best live out our faith within our families?

For many of us, the reality is that the pressures and busyness of modern family life often make it easy for faith to take a back seat. As parents, we long to nurture our children's faith, but often feel we are failing in the task. It may seem daunting, yet we have a special bond with our children which means we can be effective in ways no one else can.



The good news is, you're not on your own! We've got some great projects, events and resources to help you find new ways of keeping faith at the heart of your family.

For more information go to the Care for the Family website It is very user friendly and easy to navigate.

www.careforthefamily.org.uk

Mobile Footcare Service

Toe nail trim/thinning & file
Corn and hard-skin removal
Verruca & fungal nail
treatment

Ingrowing toenail treatment
Cracked heel treatment
Diabetic footcare
Mini manicure
Gel nail.

Francisca Hannah SAC Dip RFHP

07479 649444

francisahannah@hotmail.co.uk

Registered, fully insured

Littleover Women's Institute

2nd Thursday of the month

Littleover Social Club at 7.30pm

Members new and old welcome.
Come along and see what we do!

**Further information from
Margaret Williams on 767354**



Daisychain Benevolent Fund

Burton Road, Derby (01332 208225)

Supporting Teenage Cancer Trust
Children's Ward, Derby

Always require good quality clothing and
Bric-A-Brac. Please bring donations to
the shop only during opening times.

BACK PAIN

If you are suffering from low back
pain or neck pain, you should consider
consulting a registered chiropractor.

Many people are turning to
chiropractic for the treatment of these
and other muscle and joint problems.

Treatment is given after a
thorough case history and a
full examination.

Chiropractic aims to improve
the function of your muscles
and joints.

Treatment is often followed
by a rehabilitation plan
which may help to improve
flexibility and assist in
preventing a recurrence of
the problem.

**MJ Whatling, DC, MSc, FCC
& Associates**

**LITTLEOVER
CHIROPRACTIC CLINIC
(Est. 1988)**

**569a Burton Road, Littleover
DERBY, DE23 6FW**

Tel: 01332 768408

www.littleoverchiropractic.co.uk

CHIROPRACTIC
...so often the answer

Mrs C's Tea Cosy



Breakfast * Toasties * Sandwiches * Cakes

we also cater for buffets and business lunches

also on Facebook * Still dog friendly

Monday to Friday 8am till 2:30pm

Saturday 8:30am till 12:30pm

4 Normanton Lane Littleover DE23 6GP

(next to the church gates) Tel: 07903 761151



MayDay Solutions

152 Oaklands Ave.
Littleover Derby DE23 2QN.
In business for over 20 years.

Phone: 01332-270646
Mob: 07876243903
Email: charlie.elston@gmail.com

Charlie Elston

For all your PC needs Internet issues repairs, faults ,networking, advice and re-instals. Rebuilds and upgrades to much faster SSD drives etc. Which loads windows in seconds not in minutes.



Organization

EST.2025

Derby, UK.

Build For Living

Small Building Works
Let's Discuss Your Options



Lee Smith, Tel: 07730397437, Email: Buildingforliving@gmail.com

Who are Build For Living?

From a building family, I became a cathedral stonemason. Currently experienced in a range of building jobs including: fixing squeaking stairs, laminate floors, floor joists, fencing, boarding out lofts, kitchen fitting, tiling, repairing church walls and steps, decking, patios, raised garden beds, light fittings, and much more!

*Previously a youthworker and mental health nurse, I appreciate the importance of honesty, clear communication and reliability.
Fully DBS checked.*

If you would like to discuss a job, your options, and my availability give me a call. I look forward to hearing from you.

FOODBANK



Please drop any food off at
The Vicarage and it will be
taken to the Derby
Food4Thought Hub to be
distributed across the city.

priority semi skimmed milk



Knit and Natter

*Every Wednesday 2.15pm
In St Peter's Hub*

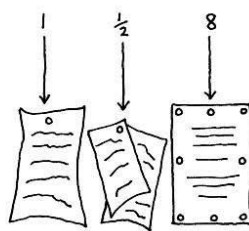
*for those who can knit like
grandma and those who've no
idea - everyone welcome!
Call Di on 01332 763938*

CHURCH NOTICE BOARDS

THE SEVEN DEADLY SINS



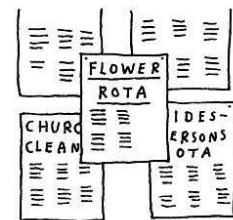
WRATH (DIRECTED AT
INVALID ADDITIONS)



GREED (USING TOO
MANY OF THE PARISH PINS)



SLOTH (NOT REMOVING
OLD NOTICES)



PRIDE (COVERING
UP OTHERS' WORK)



LUST (COVETING THY
NEIGHBOUR'S FONT, LAYOUT, ETC)



ENVY (RIVAL CHURCHES
POACHING OUR CONGREGATION)



GLUTTONY
(OVERINDULGENCE, ETC)

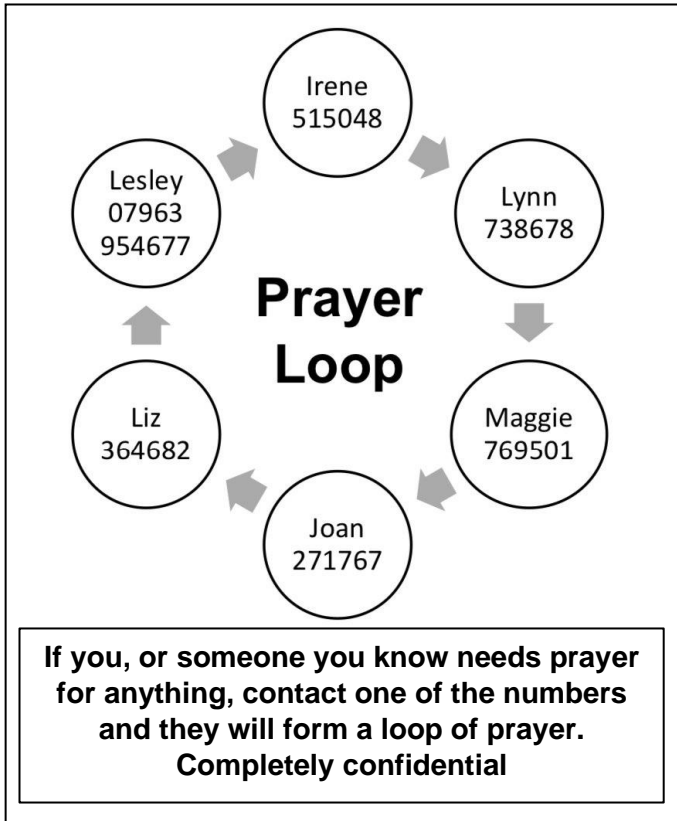
Answers to March's "British Artists" Quiz:

1. Constable 2. Lowry 3. Hockney 4. Moore 5. Hepworth 6. Bacon 7. Gormley 8. Hogarth 9. Blake
 10. Hamilton 11. Burra 12. Nicholson 13. Wright 14. Emin 15. Long 16. Turner 17. Epstein
 18. Riley 19. Landseer 20. Spencer 21. Beardsley 22. Stubbs 23. Lawrence 24. Fry 25. Sutherland
 26. Leighton 27. Gainsborough 28. Reynolds 29. Romney 30. Goldsworthy 31. Sickert 32. Morris
 33. Ruskin 34. Nash 35. Rossetti 36. Ofili 37. Hirst 38. Pasmore 39. Piper 40. Raeburn

Easter Quiz (some anagrams)

Questions	Answers
1. Would you find Tom Brown's body here?	
2. Popular ovoid confectionaries	
3. Regal headgear of prickly plants	
4. Period of fasting found in talents	
5. Jive ----- sang Let's party in 1989	
6. Do dog fairy	
7. Very warm angry cakes	
8. Lap tie	
9. Angry wooden structure	
10. Found in ponchos Anna has	
11. Day when money is given to the poor	
12. Serious burial place	
13. Found in grab Arab basement	
14. Gloat hog	
15. Would you use a siren to announce this?	
16. ----- Priest sang Breaking the law in 1980	
17. A neck smile	
18. Killed by nailing to a cross	
19. A sandy lump	
20. Headwear often judged at Easter	
21. Flamboyant meat?	
22. Rue bid	
23. Young male horse	
24. Go by above to the festival	
25. "And did those feet" hymn	
26. Legally apprehended	
27. Money making factory, cheeky	
28. Crowing bird	
29. Hill of oil-bearing fruit	
30. Ripped suspended cloth	
31. Final evening meal	
32. Found in garden I always liked	
33. Act of being disloyal and handing over	
34. Mauve garment	
35. ----- Roses sang One love in 1990	
36. Spring flowers of well-known poem	
37. Fire remains mid-week	
38. Riverside vacation	
39. Rising from the dead	
40. Sacred offering	

Prayer Requests



The Pastoral Team

Looking out for church family
– available to listen, care
and pray with you.

Talk to Alicia, Emma, Jason, Joan or
David Ditch

Members of PCC

Alicia Dring
Emma Mallord
Jason Kennedy
Chris Jones
Helene Roe
Margit Staehr
Julie Scott

Charlie Elston
John Bird
Heather Newstead
Ann Vincent
Peter Vincent
Ali Marsh-Davies

Home Groups

Home Groups are an opportunity to meet with a small group of people, in someone's home, to look at the Bible, pray, share, learn and grow together. Responsibilities are shared and members support one another as part of growing in discipleship and fellowship. If you'd like to join a group, please speak to Alicia on 767802 or contact a leader directly. Some are currently meeting online.

Learning Together **Mon** 2.30pm weekly
Led by: Robin & Terry Wood
We enjoy lively and thought-provoking discussions as well as social events and fundraising.

Pilgrims **Mon** 7.30pm fortnightly
Led by: Doreen & John Bird
Walking together on our journey of faith.

New Beginnings **Tue** 9.45am weekly
Led by: Bill & Maggie Browne
Our aim is to encourage one another to grow in Christ. As we read the Bible, share, pray, worship and laugh together, we stir each other up in our faith and our Christian walk.

Queen's Drive **Tues** 7.30pm weekly
Led by: Liz & Phil Eley
A diverse group interested in supporting people in mission.

Sticking Point **Wed** 6.45pm fortnightly
Led by: John Bradley
A group of mature Christians who support each other spiritually, with hospitality being a particular strength.

Route 66 **Tues** 7.30pm weekly
Led by: Jon & Jenny Russell
Named after 66 books in the Bible and taking the journey with Jesus together.

StAND **Wed** 1pm fortnightly
Led by the group
A group primarily of people who used to worship at St Andrew's and now part of St Peter's – always learning and growing together, praying for Blagreaves.

Platform **Wed** 7.15pm weekly
Led by: Rachel Whitehorn
We support each other in our walk with God, with an emphasis on practical application of Scripture.

ReLENTless **Wed** 7.30pm fortnightly
Led by: Helen Homes & Deidre Cheetham

Parish Activities

SUNDAY

10am Service in church or on Zoom

MONDAY

THE CROSSED KEYS CAFÉ – 9.30am to 12.30pm

TIDDLYWINKS Stay and Play 1.30pm- 2.45pm

TUESDAY

LUNCH CLUB – 12 noon till 2pm

St Peter's Hub, Normanton Lane. Guests welcome, help needed.

WEDNESDAY

MIDWEEK HOLY COMMUNION at 10.30am in church

KNIT & NATTER 2.15pm-4.15pm – in St Peter's Hub

Bring along your knitting, crochet or embroidery and chat with others as you create your latest masterpiece. Or if you're a beginner, learn from other members.

HOME GROUPS see opposite – some are meeting online.

THURSDAY

FRIDAY

9.50am RE-CREATE – 1st and 3rd weeks of the month

St Peter's Hub. A safe space to explore faith and creativity - all welcome

How can you serve at St Peter's?

We don't need volunteers in the Parish of Littleover & Blagreaves, rather we have a hope that all enrolled members of our church family will **serve** the wider work of the churches and community and not just rock up on a Sunday.

How could you serve the work of our parish? Could you chat with someone who is isolated at home? Help with our children's work or help keep the churchyard looking spruce? Make refreshments? Can you pray to see God at work in our parishes? We're not asking for hours of your time – if we all do a little then the tasks are shared and we can see lives change through the power of the Holy Spirit.

Talk to Alicia, Jason or Emma.

Special Occasions

Baptism or Thanksgiving

Please see our special booklet on the website or contact the church office on 01332 767802 for a copy. We want to get to know you before booking a date, so we look forward to meeting you in church.

Marriage & Banns

Congratulations! The rules are now different and you don't have to live in the parish any more but can be married at St Peter's if you have a qualifying connection. For more information, contact the office, look at the church website OR checkout

www.yourchurchwedding.org

We are happy to talk to you about dates, including midweek weddings.

Funerals

Arrangements are normally made through your undertaker and we can officiate at services in church, at the Crematorium and local municipal cemeteries.

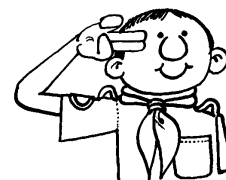
Churchyard

There are no longer any new grave spaces, but we can bury ashes in our Garden of Remembrance. No memorials are allowed on the site but an entry will be made in the Book of Remembrance in the church. Please inform the undertaker as early as possible of your wishes. Plots cannot be booked in advance. Please be aware that maintenance of the churchyard is done by volunteers and contractors which are paid for by the church family. If you can care for your own area, that helps a great deal.

UNIFORMED GROUPS

BEAVERS - for children aged 6-8

Tuesday 5.45-6.45pm,
Scout HQ
on Brayfield Road Contact:
Becky 07912 658909



CUBS - for children aged 8-10
Tuesday 7.00-8.30pm, Scout HQ

on Brayfield Road
Contact: Kathryn Hallam on 07977 250576

174th (142nd/113th Littleover Churches)

SCOUTS - for children aged 10-14
Friday 7.30-9.30pm, Scout HQ on Brayfield Road
Contact: Tom 07525 759602

3rd LITTLEOVER BROWNIES – children aged 7-10
Friday 5.30 -6.50pm, Scout HQ on Brayfield Road
Contact: Heather Collins 01773 820119

Notice Board – April 2025

1	Tuesday	9.00am	Derby Moor School Visit	Church
		11.30am	Lunch Club & Service	St Peter's Hub
2	Wednesday	10.30am	Holy Communion	Church
		12.00pm	Clergy staff meeting	Church
		2.15pm	Knit & Natter	St Peter's Hub
		2.30pm	Burial of Ashes for Robert Monk	Garden of Remembrance
3	Thursday	9.00am	St Peter's School Service	Church
		7.30pm	Worship Group	Church
4	Friday	9.50am	ReCreate	St Peter's Hub
		11.30am	Support Café	St Andrew's Hub
5	Saturday	12.00pm	Ashes Burial for Pat Childs	Churchyard
6	Sunday	Fifth Sunday of Lent		
		10.00am	All Age Worship	Church & Zoom
		3.00pm	Easter Messy Church	St Peter's Hub
		6.00pm	God Space	Church
7	Monday	1.30pm	Clergy Staff Meeting	Church
8	Tuesday	10.00am	MAP Steering Group meeting	Zoom
		12.00pm	Lunch Club	St Peter's Hub
9	Wednesday	10.30am	Holy Communion	Church
		12.45pm	StAnd Homegroup	St Andrew's Hub
		2.15pm	Knit & Natter	St Peter's Hub
10	Thursday	7.30pm	Worship Group	Church
11	Friday	2.00pm	MAP 1 Prayer meeting	St Andrew's Hub
12	Saturday			
13	Sunday	Palm Sunday		
		10.00am	Morning Worship	Church & Zoom
		5.00pm	Messy Youth	St Peter's Hub
14	Monday	11.00am	Ashes Burial for Christopher Roberts	Garden of Remembrance
15	Tuesday			
16	Wednesday	10.30am	Holy Communion	Church
		2.15pm	Knit & Natter	St Peter's Hub
17	Thursday	7.30pm	Worship Group	Church
18	Friday	10.00am	All Age Service with Walk of Witness	Church
		2.00pm	Hour at the Cross	Church
19	Saturday	9.30am	Churchyard Clean up	Churchyard
20	Sunday	Easter Day		
		8.00am	Spoken Holy Communion	Church
		10.00am	All Age Communion	Church & Zoom
21	Monday			
22	Tuesday			
23	Wednesday	10.30am	Holy Communion	Church
		12.45pm	StAnd Homegroup	St Andrew's Hub
		2.15pm	Knit & Natter	St Peter's Hub
		2.45pm	Youth Hot Choc & Toast	St Andrew's Hub
24	Thursday	7.30pm	Worship Group	Church
25	Friday	11.30am	Support Café	St Andrew's Hub
26	Saturday			
27	Sunday	First Sunday after Easter		
		10.00am	Morning Worship	Church & Zoom
28	Monday	9.30am	Crossed Keys Café	Church
		1.30pm	Tiddlywinks Stay & Play	St Peter's Hub
29	Tuesday	9.00am	St Peter's School Service	Church
		12.00pm	Lunch Club	St Peter's Hub
		7.30pm	Standing Committee meeting	Church meeting room
30	Wednesday	10.30am	Holy Communion	Church
		2.15pm	Knit & Natter	St Peter's Hub
		7.30pm	Annual Church Meeting (APCM)	Church